

HSK63A

HSK Coolant Tubes

- Fits HSK Form A & E Shanks
- Double Seal Design per DIN standard
Replacement O-Rings listed, CS= Cross Section



Part Number	Description	Inner O-Ring	Outer O-Ring	Wrench
TUBE-063A	HSK 63A Coolant Tube	10mm ID x 2mm CS	10.8mm ID x 2.4mm CS	WRENCH HSK63A COOLNT TUBE

HSK 63A Nose Index

Shrink Fit	PAGE 86
Hydraulic Chuck	PAGE 91
SX Collet Chuck	PAGE 88
MX Collet Chuck	PAGE 89
VX Collet Chuck	PAGE 89
MC Mill Chuck	PAGE 92
ER Collet Chuck	PAGE 90
End Mill Adapters	PAGE 93
TG Collet Chuck	PAGE 52
Shell Mill	PAGE 94
Drill Chucks	PAGE 94
QC Tapping	PAGE 95
Test / Runout Bars	PAGE 95

CAT40

CAT50

BT30

BT40

HSK 40E

HSK 63A

HSK 100A

STRAIGHT SHANKS

COLLETS

PARTS & ACCESS.

SHRINK MACHINES

INDEXERS



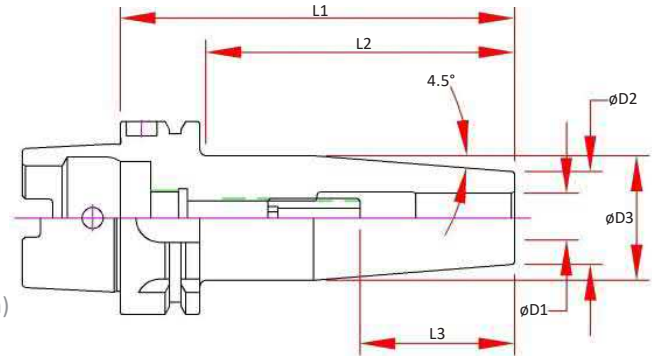
HSK063A Shrink Fit - Inch

Features

- 3 μm - 0.0001" Runout Taper to Bore
- Manufactured from ISO-40CrMoV5 (H13) Material, Heat Treated for Optimum Elasticity and Tool Life
- X Jet-Blast Pluggable Coolant Ports
- Dynamically Balanced for G2.5 @ 25,000 RPM or < 1 gmm
- Preset Screw included for 1/4" & larger for positive stop
- Designed for Carbide Cutting Tools with h6 shank tolerance

Optional (Order Separately):

- Fine Trim Balance
(Sample cutter required for balance compensation)



Part Number	D1 Bore	D2	D3	L1 Projection	L2	L3 Max Tool Enters	Preset Screw
HSK063A-SD012-080X	0.1250	0.39	0.71	3.15	2.02	2.28	-
HSK063A-SD012-130X	0.1250	0.39	0.71	5.12	3.98	4.09	-
HSK063A-SD012-160X	0.1250	0.39	0.75	6.30	5.16	5.43	-
HSK063A-SD018-080X	0.1875	0.39	0.71	3.15	2.02	2.28	-
HSK063A-SD018-130X	0.1875	0.39	0.71	5.12	3.98	4.09	-
HSK063A-SD018-160X	0.1875	0.39	0.75	6.30	5.16	5.43	-
HSK063A-SD025-080X	0.2500	0.83	1.06	3.15	2.02	1.54	SCW-ASC-SD025
HSK063A-SD025-130X	0.2500	0.83	1.06	5.12	3.98	1.54	SCW-ASC-SD025
HSK063A-SD025-160X	0.2500	0.83	1.06	6.30	5.16	1.54	SCW-ASC-SD025
HSK063A-SD031-080X	0.3125	0.83	1.06	3.15	2.02	1.54	SCW-ASC-SD031
HSK063A-SD031-160X	0.3125	0.83	1.06	6.30	5.16	1.54	SCW-ASC-SD031
HSK063A-SD037-085X	0.3750	0.94	1.06	3.35	2.21	1.73	SCW-ASC-SD037
HSK063A-SD037-130X	0.3750	0.94	1.06	5.12	3.98	1.73	SCW-ASC-SD037
HSK063A-SD037-160X	0.3750	0.94	1.06	6.30	5.16	1.73	SCW-ASC-SD037
HSK063A-SD050-090X	0.5000	0.94	1.26	3.54	2.41	1.97	SCW-ASC-SD050
HSK063A-SD050-130X	0.5000	0.94	1.26	5.12	3.98	1.97	SCW-ASC-SD050
HSK063A-SD050-160X	0.5000	0.94	1.26	6.30	5.16	1.97	SCW-ASC-SD050
HSK063A-SD062-095X	0.6250	1.06	1.34	3.74	2.61	1.97	SCW-ASC-SD062
HSK063A-SD062-130X	0.6250	1.06	1.34	5.12	3.98	1.97	SCW-ASC-SD062
HSK063A-SD062-160X	0.6250	1.06	1.34	6.30	5.16	1.97	SCW-ASC-SD062
HSK063A-SD075-100X	0.7500	1.30	1.65	3.94	2.80	2.05	SCW-ASC-SD062
HSK063A-SD075-130X	0.7500	1.30	1.65	5.12	3.98	2.05	SCW-ASC-SD062
HSK063A-SD075-160X	0.7500	1.30	1.65	6.30	5.16	2.05	SCW-ASC-SD062
HSK063A-SD100-115X	1.0000	1.73	2.09	4.53	3.50	2.28	SCW-ASC-SD100
HSK063A-SD100-115X	1.0000	1.73	2.09	5.12	3.98	2.28	SCW-ASC-SD100
HSK063A-SD100-160X	1.0000	1.73	2.09	6.30	5.16	2.28	SCW-ASC-SD100
HSK063A-SD125-120X	1.2500	1.73	2.09	4.72	3.70	2.40	SCW-ASC-SD100
HSK063A-SD125-160X	1.2500	1.73	2.09	6.30	5.16	2.40	SCW-ASC-SD100

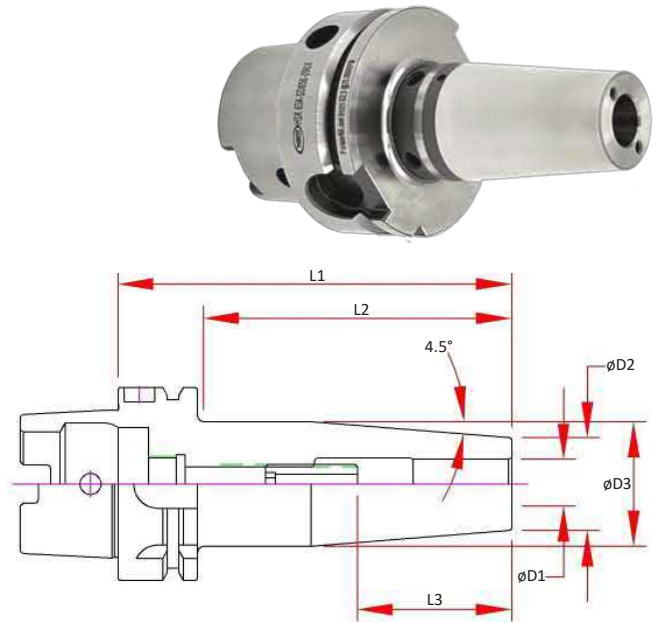
HSK063A Shrink Fit - Metric

Features

- 3 μm - 0.0001" Runout Taper to Bore
- Manufactured from ISO-40CrMoV5 (H13) Material, Heat Treated for Optimum Elasticity and Tool Life
- X Jet-Blast Pluggable Coolant Ports
- Dynamically Balanced for G2.5 @ 25,000 RPM or < 1 gmm
- Preset Screw included for 1/4" & larger for positive stop
- Designed for Carbide Cutting Tools with h6 shank tolerance

Optional (Order Separately):

- Fine Trim Balance
(Sample cutter required for balance compensation)



Note: 120mm, 130mm & 200mm in normally in stock in Germany

Part Number	D1 Bore	D2	D3	L1 Projection	L2	L3 Max Tool Enters	Preset Screw
HSK063A-SDM03-080X	3.000	0.39	0.71	3.15	2.02	2.28	-
HSK063A-SDM03-160X	3.000	0.39	0.75	6.30	5.16	5.43	-
HSK063A-SDM04-080X	4.000	0.39	0.71	3.15	2.02	2.28	-
HSK063A-SDM04-160X	4.000	0.39	0.75	6.30	5.16	5.43	-
HSK063A-SDM06-080X	6.000	0.83	1.06	3.15	2.02	1.54	SCW-ASC-05-23
HSK063A-SDM06-160X	6.000	0.83	1.06	6.30	5.16	1.54	SCW-ASC-05-23
HSK063A-SDM08-080X	8.000	0.83	1.06	3.15	2.02	1.54	SCW-ASC-06-23
HSK063A-SDM08-160X	8.000	0.83	1.06	6.30	5.16	1.54	SCW-ASC-06-23
HSK063A-SDM10-085X	10.000	0.94	1.26	3.35	2.21	1.73	SCW-ASC-08-23
HSK063A-SDM10-160X	10.000	0.94	1.26	6.30	5.16	1.73	SCW-ASC-08-23
HSK063A-SDM12-090X	12.000	0.94	1.26	3.54	2.41	1.97	SCW-ASC-10-23
HSK063A-SDM12-160X	12.000	0.94	1.26	6.30	5.16	1.97	SCW-ASC-10-23
HSK063A-SDM16-095X	16.000	1.06	1.34	3.74	2.61	1.97	SCW-ASC-12-23
HSK063A-SDM16-160X	16.000	1.06	1.34	6.30	5.16	1.97	SCW-ASC-12-23
HSK063A-SDM20-100X	20.000	1.30	1.65	3.94	2.80	2.17	SCW-ASC-12-23
HSK063A-SDM20-160X	20.000	1.30	1.65	6.30	5.16	2.17	SCW-ASC-12-23
HSK063A-SDM25-115X	25.000	1.73	2.09	4.53	3.50	2.40	SCW-ASC-16-23
HSK063A-SDM25-160X	25.000	1.73	2.09	6.30	5.16	2.40	SCW-ASC-16-23



HSK063A SX Collet Chucks

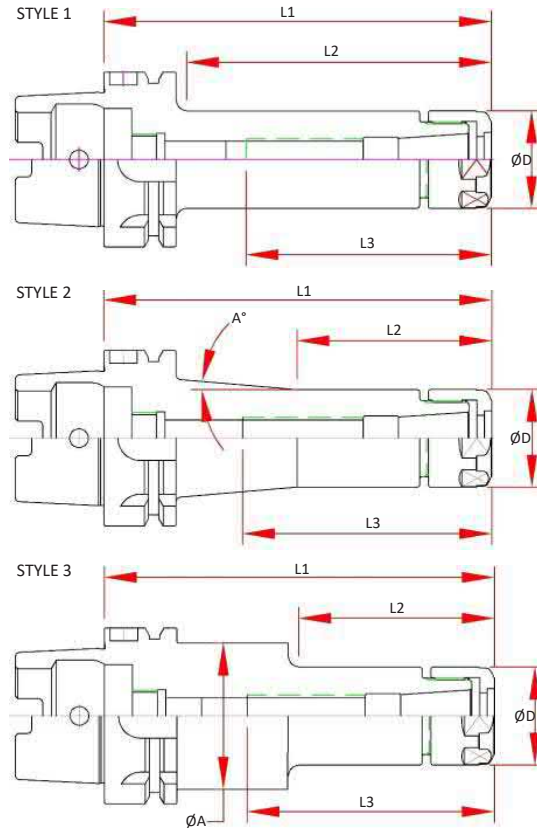
Features

- 3 μm - 0.0001" Runout Taper to Taper
- Coolant Thru Body
- Dynamically Pre-Balanced G2.5 @ 25,000 RPM or <1gmm



Optional (Order Separately):

- Wrench
- Torque Wrench
- Collets
 - 0.005mm (0.0002") Standard
 - 0.003mm (0.0001") Ultra Precision
- Fine Trim Balance
(Sample cutter required for balance compensation)



Part Number	Style	A	D	L Projection	L2	L3 Max. Preset	Collet	Nut	Wrench
HSK063A-SX06-100	1	-		3.94	1.97				
HSK063A-SX06-120	2	3°	0.77	4.72	2.36	1.73	SX06	SXN-06	SXW-06
HSK063A-SX06-150	3	Ø32		5.91	2.36				
HSK063A-SX10-105	1	-		4.13	2.91	1.65			
HSK063A-SX10-120	2	3°	1.08	4.72	2.36	1.89	SX10	SXN-10	SXW-10
HSK063A-SX10-150	3	Ø32		5.91	2.76	1.89			
HSK063A-SX16-120	1	-	1.58	4.72	3.50	2.44	SX16	SXN-16	SXW-16
HSK063A-SX16-150	1	-		5.91	4.68	2.83			
HSK063A-SX25M-090	1	-	1.97	3.54	2.52	2.44	SX25	SXN-25M	50-55 HOOK
HSK063A-SX25M-135	1	-		5.31	4.29	2.89			

HSK063A VX Mini Chuck+

Features

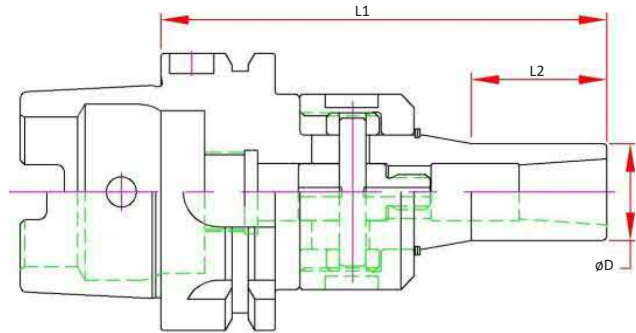
- 3 µm - 0.0001" Runout @ 4X Diameter
- Front Locking System
- Coolant Thru
- Dynamically Pre-Balanced G2.5 @ 25,000 RPM or < 1gmm

Optional (Order Separately):

- Wrench
- Torque Wrench
- Collets, STD and Jet-Blast
- Fine Trim Balance (Sample cutter required for balance compensation)



Part Number	Collet Range	D	L1 Projection	L2	Collet	Wrench	Locking Torque Max.
HSK063A-VX06-105	0.079 - 0.250	0.500	4.13	1.48	MX06		
HSK063A-VX06-150			5.91				
HSK063A-VX08-105	0.125 - 0.394	0.787	4.13	1.21	MX08	45-48 PIN	30 ft/lbs
HSK063A-VX08-150			5.91				
HSK063A-VX12-115	0.157 - 0.500	1.000	4.53	2.03	MX12		
HSK063A-VX12-150			5.91				



CAT40

CAT50

BT30

BT40

HSK 40E

HSK 63A

HSK063A MX - Mini Chuck

Features

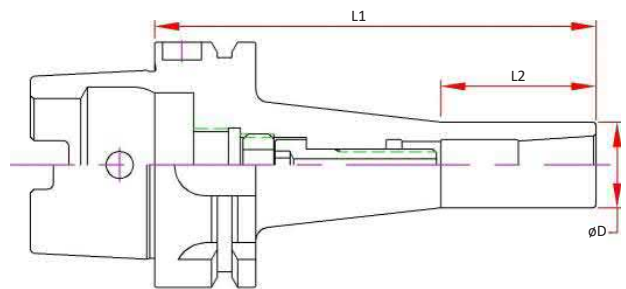
- 3 µm - 0.0001" Runout @ 4X Diameter
- Rear Draw Bolt Locking System
- Coolant Thru
- Dynamically Pre-Balanced G2.5 @ 25,000 RPM or < 1gmm

Optional (Order Separately):

- Wrench
- Torque Wrench
- Collets, STD and Jet-Blast
- Fine Trim Balance (Sample cutter required for balance compensation)



Part Number	Collet Range	D	L1 Projection	L2	Collet	Wrench	Locking Torque Max.
HSK063A-MX06-100	0.079 - 0.250	0.500	3.94	1.42	MX06		
HSK063A-MX08-100	0.125 - 0.394	0.787	3.94	1.42	MX08	MXW05	20 ft/lbs
HSK063A-MX12-110	0.157 - 0.500	1.000	4.33	1.54	MX12		



HSK 100A

STRAIGHT SHANKS

COLLETS

PARTS & ACCESS.

SHRINK MACHINES

INDEXERS



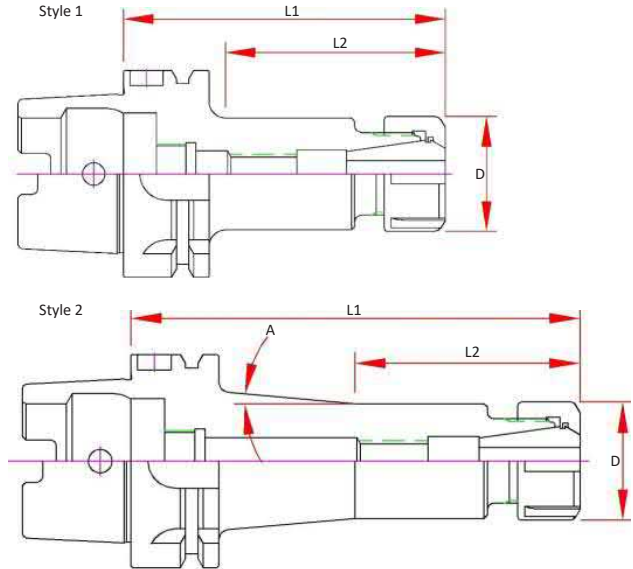
HSK063A ER Collet Chucks

Features

- 3 µm - 0.0001" Runout Taper to Taper
- Coolant Thru Body
- Dynamically Pre-Balanced G6.3 @ 20,000 RPM or <1gmm

Optional (Order Separately):

- Wrench
- Torque Wrench
- Collets
 - 0.010mm (0.0004") Standard
 - 0.005mm (0.0002") Ultra Precision
 - Sealed (Select Sizes)
 - Jet-Blast (Select Sizes)
- Fine Trim Balance (Sample cutter required for balance compensation)



Part Number	Style	A	D	Max. Tool Enters	L1 Projection	L2	Screw	Nut	Wrench
HSK063A-ER16H-100	1	-	1.10	2.00	3.94	2.79	ASC-ER16	ERN-16H	ERW-16H
HSK063A-ER16H-160	2	5°		3.05	6.30	2.36			
HSK063A-ER20H-100	1	-	1.33	1.87	3.94	2.65	ASC-ER20	ERN-20H	ERW-20H
HSK063A-ER20H-160	1	-		2.89	6.30	5.08			
HSK063A-ER25-100	1	-	1.65	2.20	3.94	2.72	ASC-ER25	ERN-25	ERW-25E
HSK063A-ER25-160	1	-		3.90	6.30	5.08			
HSK063A-ER32-100	1	-	1.96	2.17	3.94	2.83	ASC-ER32	ERN-32	ERW-32E
HSK063A-ER32-160	1	-		4.33	6.30	5.20			
HSK063A-ER40-120	1	-	2.48	2.83	4.72	3.70	ASC-ER40	ERN-40	ERW-40E
HSK063A-ER40-160	1	-		4.02	6.30	5.20			

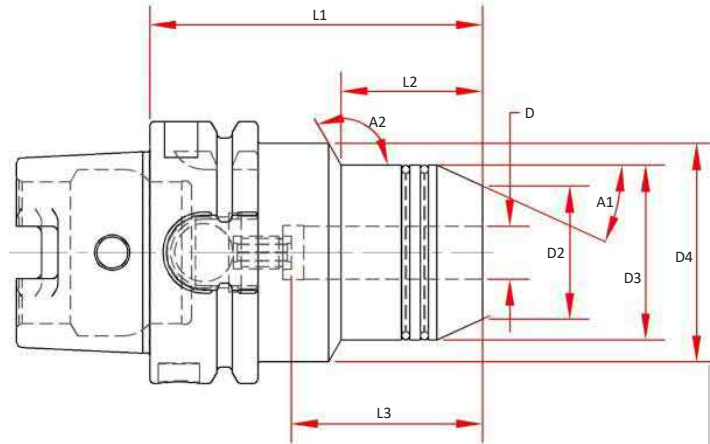
HSK063A Hydraulic Chucks

Features

- * 3 μm - 0.0001" or less run-out providing premium performance in drilling and reaming applications
- Positive Locking System
- Coolant Thru the Center
- Designed for Tool Shanks w/ ISO h6 Class Tolerance
- Dynamically Pre-Balanced G2.5 @ 25,000 RPM or < 1gmm

Optional (Order Separately):

- Wrench
- Sealed Collets
- Mill Chuck Collets



Part Number	D Bore	D2	D3	D4	A1	A2	L1 Projection	L2	L3 Max Tool Enters	Wrench
HSK063A-HC050-0315	0.5000	1.26	1.65	2.07	24.5°	120°	3.15	1.34	1.81	MXW04
HSK063A-HC075-0315	0.7500	1.50	2.07		24.5°		3.15	2.13	2.01	MXW05

CAT40

CAT50

BT30

BT40

HSK 40E

HSK 63A

HSK 100A

STRAIGHT SHANKS

COLLETS

PARTS & ACCESS.

SHRINK MACHINES

INDEXERS



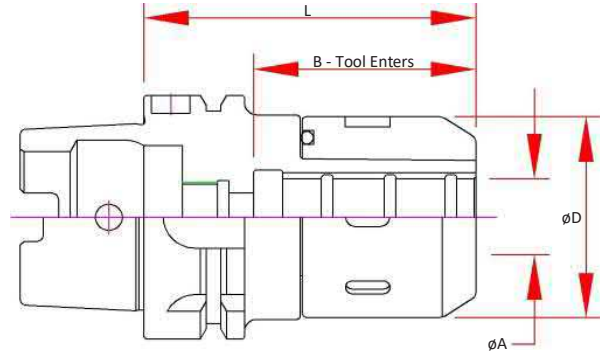
HSK063A Mill Chuck

Features

- 5 μm - 0.0002" Runout @ 4 x Cutter Shank Dia.
- Designed for Tool Shanks w/ ISO h6 Class Tolerance
- Pre-Balanced for use @ 20,000 RPM

Optional (Order Separately):

- Wrench
- Nylon Screw Seal for short tool shanks
- Fine Trim Balance
(Sample cutter required for balance compensation)



Part Number	A Bore	B Max. Tool Enters	D	L Projection	Preset Screw	Collet	Wrench
HSK063A-MC075-0374	0.7500	2.36	2.09	3.74	-	MC075	50-55 HOOK
HSK063A-MC075-0433	0.7500	2.36	2.09	4.33	ASC-16-18	MC075	50-55 HOOK
HSK063A-MC100-0394	1.0000	2.40	2.44	3.94	-	MC100	58-65 HOOK
HSK063A-MC100-0472	1.0000	2.40	2.44	4.72	ASC-16-18	MC100	58-65 HOOK
HSK063A-MC125-0394	1.2500	2.99	2.76	3.94	-	MC125	65-70 HOOK
HSK063A-MC125-0472	1.2500	2.99	2.76	4.72	ASC-16-18	MC125	65-70 HOOK
HSK063A-MC20-110	20.000	2.36	2.09	4.33	ASC-16-18	MC20	50-55 HOOK
HSK063A-MC32-120	32.000	2.99	2.76	4.72	ASC-16-18	MC32	65-70 HOOK

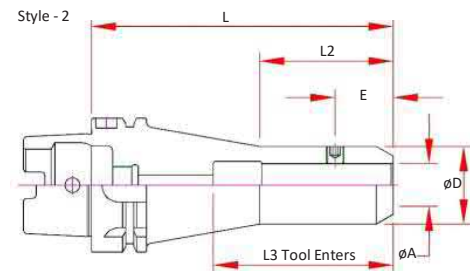
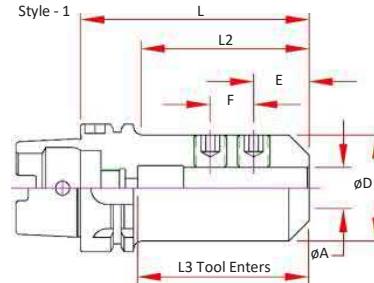
HSK063A End Mill Adapters

Features

- 3 μm - 0.0001" Bore Runout
- H5 Bore Tolerance or better
- Coolant Thru
- Pre-Balanced for use @ 20,000 RPM
(HSK100A @ 15,000 RPM)

Optional (Order Separately):

- Jet-Blast (add "J" to the part number)



Part Number	A Bore	D	E	F	L Projection	L2	L3 Max. Tool Enters	Screw Number	Style
HSK063A-EM012-0250	0.1250	0.69	0.19	-	2.50	1.28	1.63	3	1
HSK063A-EM012-0400	0.1250	0.69	0.19	-	4.00	2.78	1.63	3	1
HSK063A-EM012-0600	0.1250	0.69	0.19	-	6.00	2.50	1.63	3	2
HSK063A-EM018-0400	0.1875	0.69	0.44	-	4.00	2.78	1.63	3	1
HSK063A-EM018-0600	0.1875	0.69	0.44	-	6.00	2.50	1.63	3	2
HSK063A-EM025-0250	0.2500	0.78	0.44	-	2.50	1.28	1.63	4	1
HSK063A-EM025-0400	0.2500	0.78	0.44	-	4.00	2.78	1.63	4	1
HSK063A-EM025-0600	0.2500	0.78	0.44	-	6.00	2.50	1.63	4	2
HSK063A-EM031-0250	0.3125	0.88	0.44	-	2.50	1.28	1.63	4	1
HSK063A-EM031-0400	0.3125	0.88	0.44	-	4.00	2.78	1.63	4	1
HSK063A-EM031-0600	0.3125	0.88	0.44	-	6.00	3.00	1.63	4	2
HSK063A-EM037-0250	0.3750	1.00	0.75	-	2.50	1.28	1.50	5	1
HSK063A-EM037-0400	0.3750	1.00	0.75	-	4.00	2.78	1.50	5	1
HSK063A-EM037-0600	0.3750	1.00	0.75	-	6.00	3.00	1.50	5	2
HSK063A-EM050-0315	0.5000	1.25	0.88	-	3.15	1.93	2.10	6	1
HSK063A-EM050-0400	0.5000	1.25	0.88	-	4.00	2.78	2.10	6	1
HSK063A-EM050-0600	0.5000	1.25	0.88	-	6.00	3.00	2.10	6	2
HSK063A-EM062-0315	0.6250	1.50	0.94	-	3.15	1.93	2.10	7	1
HSK063A-EM062-0400	0.6250	1.50	0.94	-	4.00	2.78	2.10	7	1
HSK063A-EM062-0600	0.6250	1.50	0.94	-	6.00	4.78	2.10	7	1
HSK063A-EM075-0315	0.7500	1.75	1.00	-	3.15	2.08	1.97	8	1
HSK063A-EM075-0400	0.7500	1.75	1.00	-	4.00	2.94	1.97	8	1
HSK063A-EM075-0600	0.7500	1.75	1.00	-	6.00	4.94	1.97	8	1
HSK063A-EM100-0400	1.0000	2.00	1.12	1.00	4.00	2.94	2.95	(2) 10	1
HSK063A-EM100-0600	1.0000	2.00	1.12	1.00	6.00	2.94	2.95	(2) 10	1
HSK063A-EM125-0435	1.2500	2.81	1.12	1.00	4.35	3.32	3.23	(2) 11	1

CAT40
CAT50
BT30
BT40
HSK 40E
HSK 63A
HSK 100A
STRAIGHT SHANKS
COLLETS
PARTS & ACCESS.
SHRINK MACHINES
INDEXERS



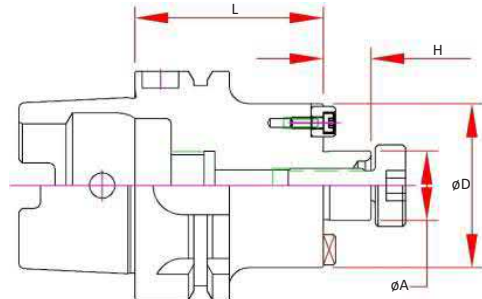
HSK063A Shell Mill Adapters

Features

- 3 µm - 0.0001" Bore Runout
- H5 Bore Tolerance or better
- Coolant Thru Body
- Pre-Balanced for use @ 20,000 RPM

Optional (Order Separately):

- FX Coolant (add "F" to the part number)

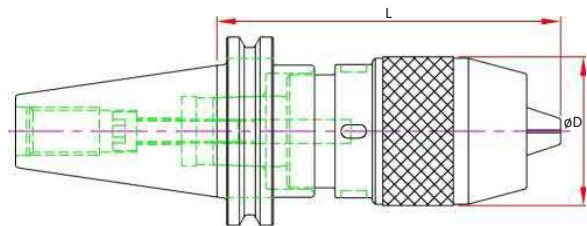


Part Number	A Pilot	D	H	L Projection	Drive Key Size	Drive Key Number	Mounting Screw Thread	Mounting Screw#
HSK063A-SM050-0177				1.77				
HSK063A-SM050-0394	0.500	1.38	0.57	3.94	0.250	DK-SM050	1/4-28	SCW-SM050
HSK063A-SM050-0630				6.30				
HSK063A-SM075-0177				1.77				
HSK063A-SM075-0394	0.75	1.71	0.69	3.94	0.312	DK-SM075	3/8-24	SCW-SM075
HSK063A-SM075-0630				6.30				
HSK063A-SM075-0800				8.00				
HSK063A-SM100-0197				1.97				
HSK063A-SM100-0394	1.00	1.97	0.69	3.94	0.375	DK-SM100	1/2-20	SCW-SM100
HSK063A-SM100-0630				6.30				
HSK063A-SM125-0236	1.25	2.75	0.69	2.36	0.500	DK-SM125	5/8-18	SCW-SM125
HSK063A-SM150-0236	1.50	3.78	0.94	2.36	0.625	DK-SM150	3/4-16	SCW-SM150

HSK063A Drill Chuck

Features:

- Non Coolant
- Keyless w/ slots for spanner wrench (sold separately)

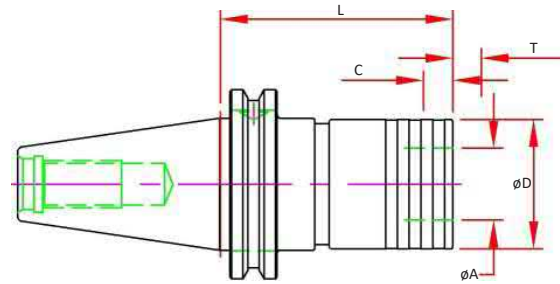


Part Number	Range	D	L Projection	Wrench
HSK 63A-DC13-155	0.04 - 0.50	1.96	6.10	DCW13

TC - Tension & Compression Holders

Features

- Tension and Compression Stroke for improved tap life
- Pressure Point Mechanism to increase the cutting pressure and ensure a positive start
- Size 3 includes pull to release system to prevent damage from over stroke
- TC Holders are not designed for Coolant Thru
- For use with both RA and TC adapters
 - TC for machines with limited "Z" control
- 2 Piece Design is assembled Straight Shank Tap Holder with End Mill Adapter
- Tapers are ground better than AT3 for optimal T.I.R.

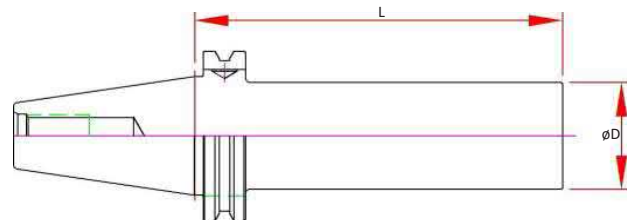


Size	Standard Spindle Part Number	Capacity	A	D	L	T Tension	C Comp.
1	HSK063A-TC1-102	#6-9/16	0.75	1.42	4.02	0.30	0.30
2	HSK063A-TC2-137	5/16-7/8	1.22	2.09	5.39	0.49	0.49

HSK063A Test Bar

Features

- Concentric to Taper within 3µm (0.0001") TIR
- Tapers are ground better than AT3 for optimal T.I.R.
- Hardened & Normalized for consistency
- 100% Individually inspected with Certification Sheet included
- Wood Box Included
- Laser Marked with Actual Diameter and Length



Part Number	Spindle	D	L Projection
HSK63A-TB150-1000	HSK63A & C	1.50	10.00

CAT40

CAT50

BT30

BT40

HSK 40E

HSK 63A

HSK 100A

STRAIGHT SHANKS

COLLETS

PARTS & ACCESS.

SHRINK MACHINES

INDEXERS

