

HSK40E

HSK Coolant Tubes

- Fits HSK Form A & E Shanks
- Double Seal Design per DIN standard
Replacement O-Rings listed, CS= Cross Section



Part Number	Description	Inner O-Ring	Outer O-Ring	Wrench
TUBE-040A	HSK 40A Coolant Tube	TUBE-040A ORING	TUBE-040A ORING	WRENCH HSK40A COOLNT TUBE

HSK 40E Nose Index

Shrink Fit	PAGE 80
SX Collet Chuck	PAGE 82
ER Collet Chuck	PAGE 83

CAT40

CAT50

BT30

BT40

HSK 40E

HSK 63A

HSK 100A

STRAIGHT
SHANKS

COLLETS

PARTS &
ACCESS.

SHRINK
MACHINES

INDEXERS



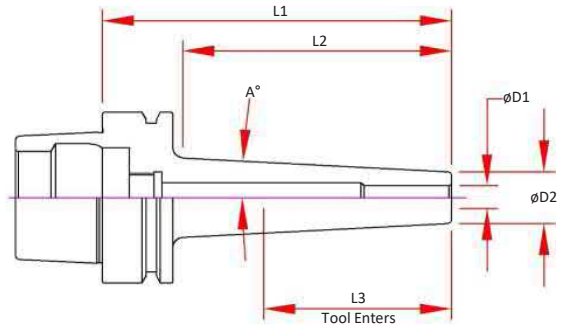
HSK040E Shrink Fit - Inch

Features

- 3 μm - 0.0001" Runout Taper to Bore
- Manufactured from ISO-40CrMoV5 (H13) Material, Heat Treated for Optimum Elasticity and Tool Life
- X Jet-Blast Pluggable Coolant Ports
- Dynamically Balanced for G2.5 @ 25,000 RPM or < 1 gmm
- Preset Screw included for 1/4" & larger for positive stop
- Designed for Carbide Cutting Tools with h6 shank tolerance

Optional (Order Separately):

- Fine Trim Balance
(Sample cutter required for balance compensation)



Part Number	D1 Bore	D2	A°	L1 Projection	L2	L3 Tool Enters
HSK040A-SD012-060-SN	0.1250	0.354	3°	2.36	1.46	1.53
HSK040A-SD018-060-SN	0.1875	0.433	3°	2.36	1.46	1.53
HSK040A-SD025-060-SN	0.2500	0.472	3°	2.36	1.46	1.53
HSK040A-SD037-060-SN	0.3750	0.630	3°	2.36	1.46	1.65
HSK040A-SD050-060-SN	0.5000	0.709	3°	2.36	1.46	1.65

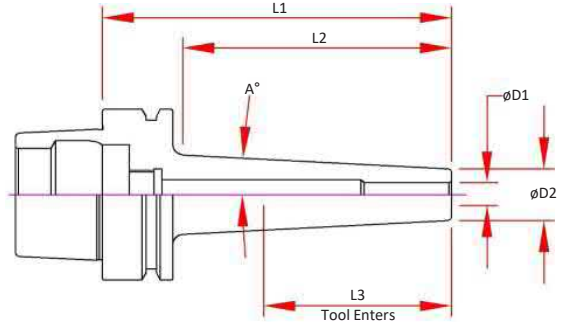
HSK040E Shrink Fit - Metric

Features

- 3 μm - 0.0001" Runout Taper to Bore
- Manufactured from ISO-40CrMoV5 (H13) Material, Heat Treated for Optimum Elasticity and Tool Life
- X Jet-Blast Pluggable Coolant Ports
- Dynamically Balanced for G2.5 @ 25,000 RPM or < 1 gmm
- Preset Screw included for 1/4" & larger for positive stop
- Designed for Carbide Cutting Tools with h6 shank tolerance

Optional (Order Separately):

- Fine Trim Balance
(Sample cutter required for balance compensation)



Part Number	D1 Bore	D2	A°	L1 Projection	L2	L3 Tool Enters
HSK040A-SDM03-060-SN	3.000	0.354	3°	2.36	1.46	1.53
HSK040A-SDM04-060-SN	4.000	0.394	3°	2.36	1.46	1.53
HSK040A-SDM06-060-SN	6.000	0.472	3°	2.36	1.46	1.53
HSK040A-SDM08-060-SN	8.000	0.551	3°	2.36	1.46	1.53
HSK040A-SDM10-060-SN	10.000	0.630	3°	2.36	1.46	1.65
HSK040A-SDM12-060-SN	12.000	0.709	3°	2.36	1.46	1.65

CAT40

CAT50

BT30

BT40

HSK 40E

HSK 63A

HSK 100A

STRAIGHT
SHANKS

COLLETS

PARTS &
ACCESS.

SHRINK
MACHINES

INDEXERS



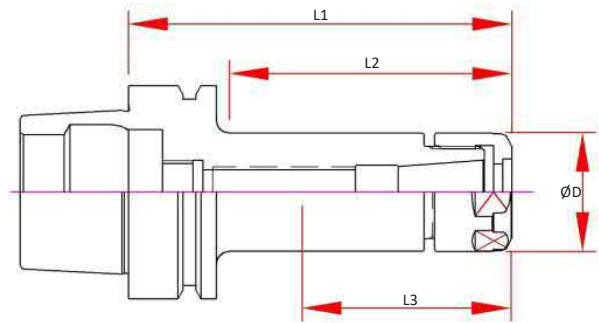
HSK040E SX Collet Chucks

Features

- 3 μm - 0.0001" Runout Taper to Taper
- Coolant Thru Body
- Dynamically Pre-Balanced G2.5 @ 25,000 RPM or <1gmm

Optional (Order Separately):

- Wrench
- Torque Wrench
- Collets
 - 0.005mm (0.0002") Standard
 - 0.003mm (0.0001") Ultra Precision
- Fine Trim Balance
(Sample cutter required for balance compensation)



Part Number	D	L Projection	L2	L3	Collet	Nut	Wrench
HSK040E-SX06-060	0.77	2.36	1.46	1.56	SX06	SXN-06	SXW-06
HSK040E-SX06-090	0.77	3.54	2.64	2.48	SX06	SXN-06	SXW-06
HSK040E-SX10-060	1.08	2.36	1.46	1.61	SX10	SXN-10	SXW-10
HSK040E-SX10-090	1.08	3.54	2.64	2.48	SX10	SXN-10	SXW-10
HSK040E-SX16-080	1.58	3.15	2.32	2.44	SX16	SXN-16	SXW-16

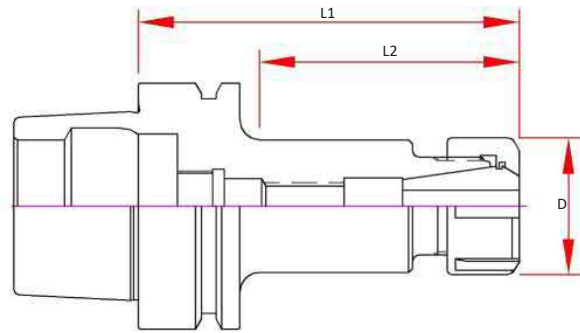
HSK040E ER Collet Chucks

Features

- 3 μm - 0.0001" Runout Taper to Taper
- Coolant Thru Body
- Dynamically Pre-Balanced G6.3 @ 20,000 RPM or <1gmm

Optional (Order Separately):

- Wrench
- Torque Wrench
- Collets
 - 0.010mm (0.0004") Standard
 - 0.005mm (0.0002") Ultra Precision
 - Sealed (Select Sizes)
 - Jet-Blast (Select Sizes)
- Fine Trim Balance
(Sample cutter required for balance compensation)



Part Number	D	Max. Tool Enters	L1 Projection	L2	Screw	Nut	Wrench
HSK040E-ER11H-060	0.79	0.67	2.36	1.54	ASC-ER11	ERN-11H	ERW-11H
HSK040E-ER16H-060	1.10	0.87	2.36	1.54	ASC-ER16	ERN-16H	ERW-16H
HSK040E-ER25-070	1.65	1.10	2.76	1.93	ASC-ER25	ERN-25	ERW-25E

CAT40

CAT50

BT30

BT40

HSK 40E

HSK 63A

HSK 100A

STRAIGHT SHANKS

COLLETS

PARTS & ACCESS.

SHRINK MACHINES

INDEXERS

