

HSK100A

HSK Coolant Tubes

- Fits HSK Form A & E Shanks
- Double Seal Design per DIN standard
Replacement O-Rings listed, CS= Cross Section



Part Number	Description	Inner O-Ring	Outer O-Ring	Wrench
TUBE-100A	HSK 100A Coolant Tube	15mm ID x 3mm CS	15mm ID x 3mm CS	WRENCH HSK100 COOLINT TUBE

HSK 100A Nose Index

Shrink Fit	PAGE 98
SX Collet Chuck	PAGE 100
VX Collet Chuck	PAGE 101
MC Mill Chuck	PAGE 102
ER Collet Chuck	PAGE 103
End Mill Adapters	PAGE 104
Shell Mill	PAGE 105
Test / Runout Bars	PAGE 102

CAT40

CAT50

BT30

BT40

HSK 40E

HSK 63A

HSK100A

STRAIGHT SHANKS

COLLETS

PARTS & ACCESS.

SHRINK MACHINES

INDEXERS



HSK100A Shrink Fit - Inch

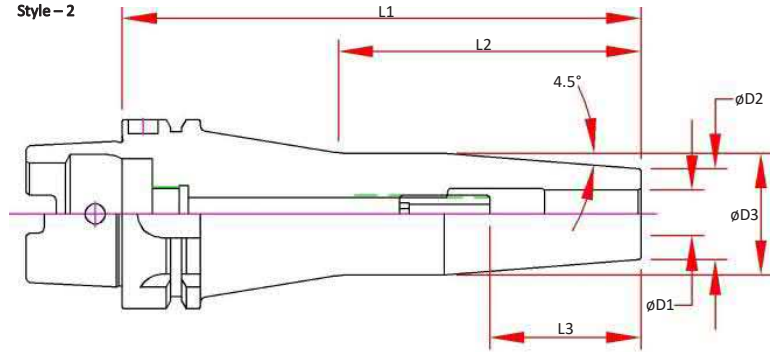
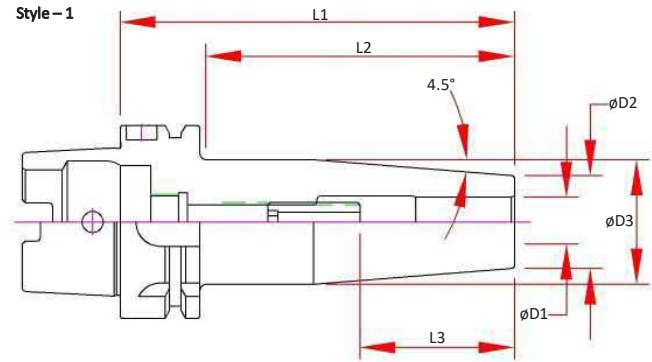
Features

- 3 μm - 0.0001" Runout Taper to Bore
- Manufactured from ISO-40CrMoV5 (H13) Material, Heat Treated for Optimum Elasticity and Tool Life
- Coolant Thru the Center
- Dynamically Balanced for G2.5 @ 25,000 RPM or < 1 gmm
- Preset Screw included for 1/4" & larger for positive stop
- Designed for Carbide Cutting Tools with h6 shank tolerance



Optional (Order Separately):

- Jet-Blast Coolant Ports - Add "-J"
- Fine Trim Balance (Sample cutter required for balance compensation)



Part Number	D1 Bore	D2	D3	L1 Projection	L2	L3 Max Tool Enters	Preset Screw	Style
HSK100A-SD025-085	0.2500	0.83	1.06	3.35	1.91	1.46	SCW-ASC-05-23	1
HSK100A-SD025-160	0.2500	0.83	1.06	6.30	2.40	1.46	SCW-ASC-05-23	2
HSK100A-SD031-085	0.3125	0.83	1.06	3.35	1.91	1.46	SCW-ASC-06-23	1
HSK100A-SD031-160	0.3125	0.83	1.06	6.30	2.40	1.46	SCW-ASC-06-23	2
HSK100A-SD037-090	0.3750	0.94	1.24	3.54	2.20	1.65	SCW-ASC-08-23	1
HSK100A-SD037-160	0.3750	0.94	1.26	6.30	2.40	1.65	SCW-ASC-08-23	2
HSK100A-SD050-095	0.5000	0.94	1.26	3.74	2.40	1.89	SCW-ASC-10-23	1
HSK100A-SD050-160	0.5000	0.94	1.26	6.30	2.40	1.89	SCW-ASC-10-23	2
HSK100A-SD062-100	0.6250	1.06	1.34	3.94	2.60	2.01	SCW-ASC-12-23	1
HSK100A-SD062-160	0.6250	1.06	1.34	6.30	2.40	2.01	SCW-ASC-12-23	2
HSK100A-SD075-105	0.7500	1.30	1.61	4.13	2.80	2.09	SCW-ASC-12-23	1
HSK100A-SD075-160	0.7500	1.30	1.61	6.30	2.99	2.09	SCW-ASC-12-23	2
HSK100A-SD100-115	1.0000	1.73	2.09	4.53	3.19	2.32	SCW-ASC-16-23	1
HSK100A-SD100-160	1.0000	1.73	2.09	6.30	4.57	2.32	SCW-ASC-16-23	2
HSK100A-SD125-120	1.2500	1.73	2.09	4.72	3.39	2.48	SCW-ASC-16-23	1
HSK100A-SD125-160	1.2500	1.73	2.09	6.30	4.57	2.48	SCW-ASC-16-23	2

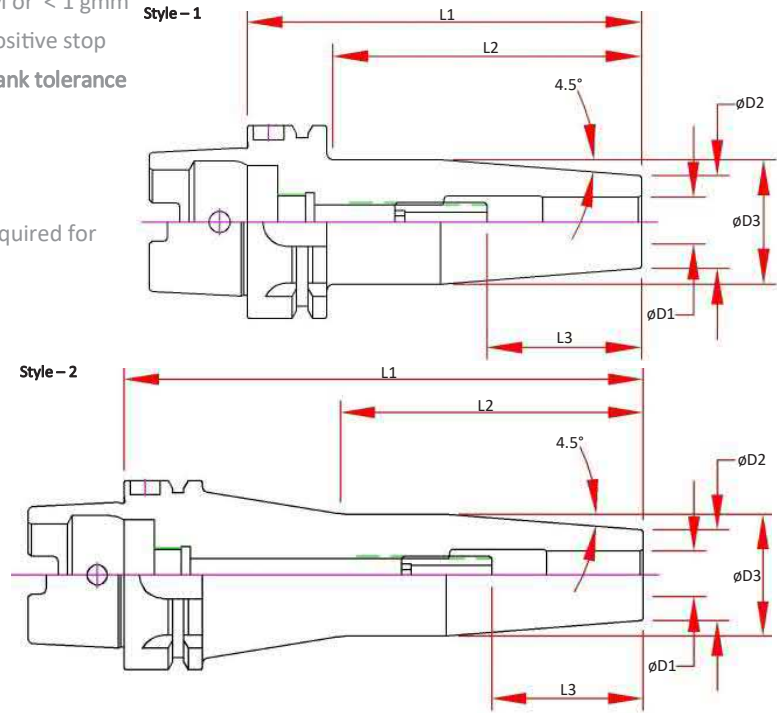
HSK100A Shrink Fit - Metric

Features

- 3 μm - 0.0001" Runout Taper to Bore
- Manufactured from ISO-40CrMoV5 (H13) Material, Heat Treated for Optimum Elasticity and Tool Life
- Coolant Thru the Center
- Dynamically Balanced for G2.5 @ 25,000 RPM or < 1 gmm
- Preset Screw included for 1/4" & larger for positive stop
- Designed for Carbide Cutting Tools with h6 shank tolerance

Optional (Order Separately):

- Jet-Blast Coolant Ports - Add "-J"
- Fine Trim Balance (Sample cutter required for balance compensation)



Part Number	D1 Bore	D2	D3	L1 Projection	L2	L3 Max Tool Enters	Preset Screw	Style
HSK100A-SDM06-085	6	21	27	85	51	37	SCW-ASC-05-23	1
HSK100A-SDM06-160	6	21	27	160	126	37	SCW-ASC-05-23	2
HSK100A-SDM08-085	8	21	27	85	51	37	SCW-ASC-06-23	1
HSK100A-SDM08-160	8	21	27	160	126	37	SCW-ASC-06-23	2
HSK100A-SDM10-090	10	24	32	90	56	42	SCW-ASC-08-23	1
HSK100A-SDM10-160	10	24	32	160	126	42	SCW-ASC-08-23	2
HSK100A-SDM12-095	12	24	32	95	61	48	SCW-ASC-10-23	1
HSK100A-SDM12-160	12	24	32	160	126	48	SCW-ASC-10-23	2
HSK100A-SDM16-100	16	27	34	100	66	51	SCW-ASC-12-23	1
HSK100A-SDM16-160	16	27	34	160	126	51	SCW-ASC-12-23	2
HSK100A-SDM20-105	20	33	42	105	71	53	SCW-ASC-12-23	1
HSK100A-SDM20-160	20	33	42	160	126	53	SCW-ASC-12-23	2
HSK100A-SDM25-115	25	44	53	115	81	59	SCW-ASC-16-23	1
HSK100A-SDM25-160	25	44	53	160	126	59	SCW-ASC-16-23	2
HSK100A-SDM32-120	32	44	53	120	86	63	SCW-ASC-16-23	1
HSK100A-SDM32-160	32	44	53	160	126	63	SCW-ASC-16-23	2



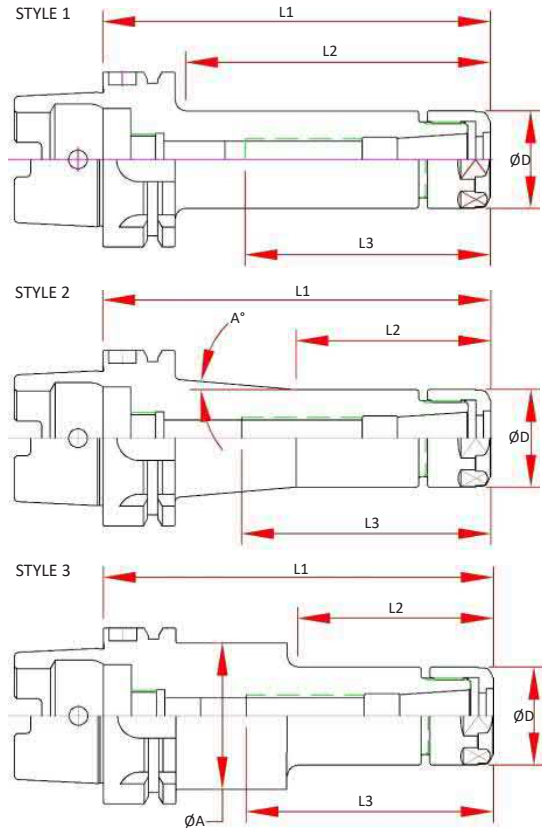
HSK100A SX Collet Chucks

Features

- 3 μm - 0.0001" Runout Taper to Taper
- Coolant Thru Body
- Dynamically Pre-Balanced G2.5 @ 25,000 RPM or <1gmm

Optional (Order Separately):

- Wrench
- Torque Wrench
- Collets
 - 0.005mm (0.0002") Standard
 - 0.003mm (0.0001") Ultra Precision
- Fine Trim Balance (Sample cutter required for balance compensation)



Part Number	Style	D	L1 Projection	L2	L3 Max. Preset	Collet	Nut	Wrench
HSK100A-SX10-105	1	1.08	4.13	2.83	1.65	SX10	SXN-10	SXW-10
HSK100A-SX10-150	3		5.91	2.76				
HSK100A-SX16-120	1	1.58	4.72	3.54	2.44	SX16	SXN-16	SXW-16
HSK100A-SX16-150	1		5.91	4.68				
HSK100A-SX16-200	1		7.87	4.50				
HSK100A-SX25M-095	1	1.97	3.74	2.60	2.89	SX25	SXN-25M	50-55 HOOK
HSK100A-SX25M-135	1		5.31	4.17				
HSK100A-SX25M-200	1		7.87	6.73				

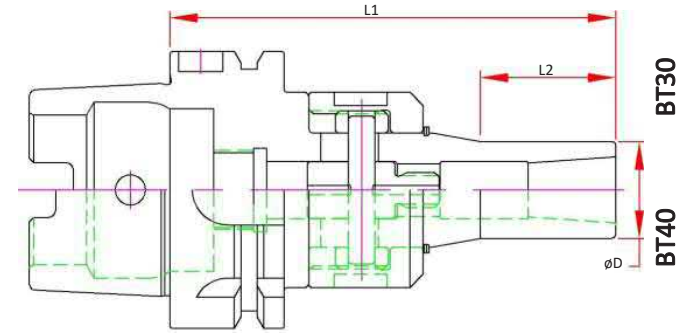
HSK100A VX Mini Chuck

Features

- 3 μm - 0.0001" Runout @ 4X Diameter
- Front Locking System
- Coolant Thru
- Dynamically Pre-Balanced G2.5 @ 25,000 RPM or < 1gmm

Optional (Order Separately):

- Wrench
- Torque Wrench
- Collets, STD and Jet-Blast
- Fine Trim Balance (Sample cutter required for balance compensation)



	Part Number	Collet Range	D	L1 Projection	L2	Collet	Wrench	Locking Torque Max.
HSK100A	HSK100A-VX06-110	0.079 - 0.250	0.500	4.33	1.48	MX06	45-48 PIN	30 ft/lbs
	HSK100A-VX06-150			5.91				
	HSK100A-VX08-110	0.125 - 0.394	0.787	4.33	1.21	MX08		
	HSK100A-VX08-150			5.91				
	HSK100A-VX12-120	0.157 - 0.500	1.000	4.53	2.03	MX12		
	HSK100A-VX12-165			6.49				



CAT40
CAT50
BT30
BT40
HSK 40E
HSK 63A
HSK100A
STRAIGHT SHANKS
COLLETS
PARTS & ACCESS.
SHRINK MACHINES
INDEXERS

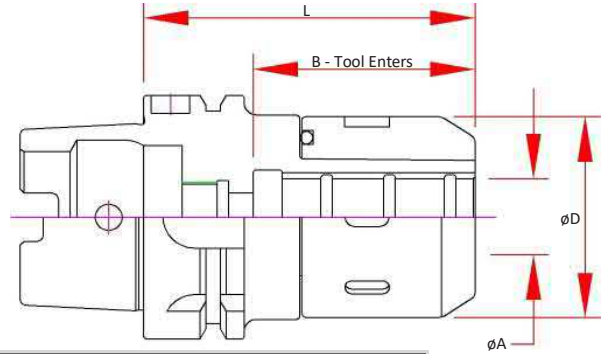
HSK100A Mill Chuck

Features

- 5 μm - 0.0002" Runout @ 4 x Cutter Shank Dia.
- Designed for Tool Shanks w/ ISO h6 Class Tolerance
- Pre-Balanced for use @ 20,000 RPM

Optional (Order Separately):

- Wrench
- Nylon Screw Seal for short tool shanks
- Fine Trim Balance (Sample cutter required for balance compensation)

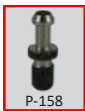
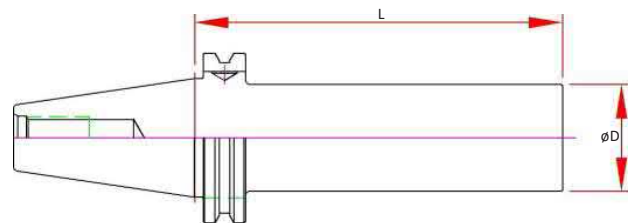
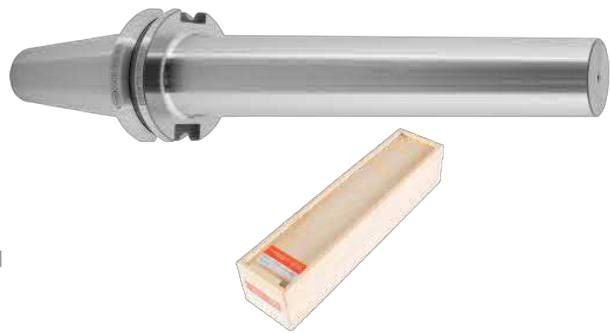


	Part Number	A Bore	B Max. Tool Enters	D	L Projection	Preset Screw	Collet	Wrench
3/4	HSK100A-MC075-0453	0.7500	2.52	2.09	4.53	ASC-16-18	MC075	50-55 HOOK
1"	HSK100A-MC100-0512	1.0000	2.40	2.44	5.12	ASC-16-18	MC100	58-65 HOOK
1-1/4	HSK100A-MC125-0531	1.2500	3.07	2.76	5.31	ASC-16-18	MC125	65-70 HOOK
20mm	HSK100A-MC20-115	20.000	2.52	2.09	4.53	ASC-16-18	MC20	50-55 HOOK
32mm	HSK100A-MC32-135	32.000	3.07	2.76	5.31	ASC-16-18	MC32	65-70 HOOK

TB - Test Bar

Features

- Concentric to Taper within 3 μm (0.0001") TIR
- Tapers are ground better than AT3 for optimal T.I.R.
- Hardened & Normalized for consistency
- 100% Individually Inspected with Certification Sheet included
- Wood Box Included
- Laser Marked with Actual Diameter and Length



Part Number	Spindle	D	L Projection
HSK100A-TB50-320	HSK100A & C	50mm	320mm

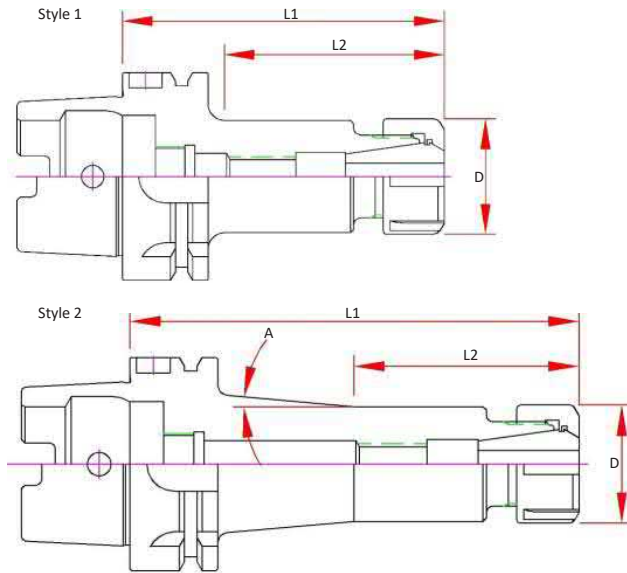
HSK100A ER Collet Chucks

Features

- 3 μm - 0.0001" Runout Taper to Taper
- Coolant Thru Body
- Dynamically Pre-Balanced G6.3 @ 15,000 RPM or <1gmm

Optional (Order Separately):

- Wrench
- Torque Wrench
- Collets
 - 0.010mm (0.0004") Standard
 - 0.005mm (0.0002") Ultra Precision
 - Sealed (Select Sizes)
 - Jet-Blast (Select Sizes)



Part Number	Style	A	D	Max. Tool Enters	L1 Projection	L2	Screw	Nut	Wrench
HSK100A-ER16H-100	1	-	1.10	2.80	3.94	2.20	ASC-ER16	ERN-16H	ERW-16H
HSK100A-ER16H-160	2	6°	1.10	5.17	6.30	2.76	ASC-ER16	ERN-16H	ERW-16H
HSK100A-ER25-100	1	-	1.65	2.63	3.94	2.20	ASC-ER25	ERN-25	ERW-25E
HSK100A-ER25-160	2	3°	1.65	2.95	6.30	3.35	ASC-ER25	ERN-25	ERW-25E
HSK100A-ER32-100	1	-	1.96	2.67	3.94	2.20	ASC-ER32	ERN-32	ERW-32E
HSK100A-ER32-160	2	3°	1.96	3.22	6.30	3.39	ASC-ER32	ERN-32	ERW-32E
HSK100A-ER40-120	1	-	2.48	3.46	4.72	3.35	ASC-ER40	ERN-40	ERW-40E
HSK100A-ER40-160	2	4°	2.48	3.78	6.30	3.48	ASC-ER40	ERN-40	ERW-40E

CAT40

CAT50

BT30

BT40

HSK 40E

HSK 63A

HSK100A

STRAIGHT SHANKS

COLLETS

PARTS & ACCESS.

SHRINK MACHINES

INDEXERS



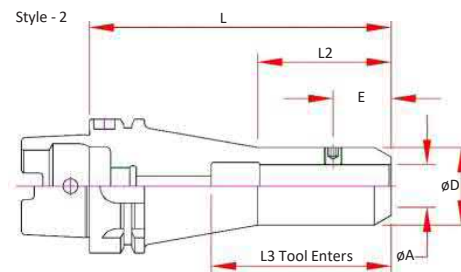
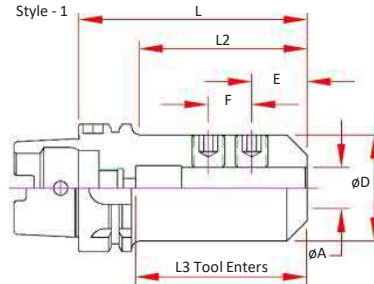
HSK100A End Mill Adapters

Features

- 3 μm - 0.0001" Bore Runout
- H5 Bore Tolerance or better
- Coolant Thru
- Pre-Balanced for use @ 20,000 RPM
(HSK100A @ 15,000 RPM)

Optional (Order Separately):

- Jet-Blast (add "J" to the part number)



Part Number	A Bore	D	E	F	L Projection	L2	L3 Max. Tool Enters	Screw Number	Style
HSK100A-EM037-0400	0.3750	1.00	0.75	-	4.00	2.85	3.37	5	1
HSK100A-EM037-0600					6.00	3.00	5.37		2
HSK100A-EM050-0400	0.5000	1.25	0.88	-	4.00	2.85	2.56	6	1
HSK100A-EM050-0600					6.00	3.13	3.07		2
HSK100A-EM050-0800					8.00	3.13	3.07		2
HSK100A-EM062-0400	0.6250	1.50	0.94	-	4.00	2.85	2.56	7	1
HSK100A-EM062-0600					6.00	4.85	3.50		1
HSK100A-EM075-0400					4.00	2.85	2.56		1
HSK100A-EM075-0600	0.7500	1.75	1.00	-	6.00	1.97	4.00	8	2
HSK100A-EM075-0800					8.00	1.97	4.00		2
HSK100A-EM100-0400					4.00	2.85	2.70		1
HSK100A-EM100-0600	1.0000	2.56	1.12	1.00	6.00	4.85	4.50	(2) 10	1
HSK100A-EM100-0800					8.00	6.85	4.50		1
HSK100A-EM125-0400					4.00	2.85	2.81		1
HSK100A-EM125-0600	1.2500	2.81	1.12	1.00	6.00	4.85	3.23	(2) 11	1
HSK100A-EM125-0800					8.00	6.85	3.23		1
HSK100A-EM150-0450	1.5000	2.75	1.12	1.00	4.50	3.35	3.26	(2) 11	1
HSK100A-EM150-0600					6.00	5.35	3.26		1
HSK100A-EM200-0550					5.50	4.35	4.13		(2) 13

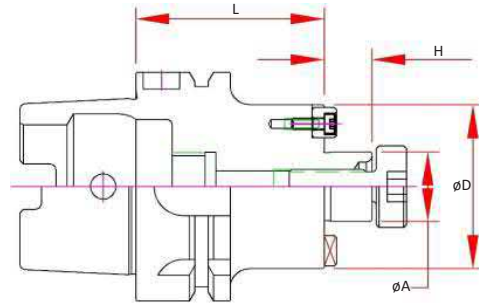
HSK100A Shell Mill Adapters

Features

- Coolant Thru Body
- Pre-Balanced for use @ 15,000 RPM

Optional (Order Separately):

- FX Coolant (add "F" to the part number)



Part Number	A Pilot	D	H	L Projection	Drive Key Size	Drive Key Number	Mounting Screw Thread	Mounting Screw#
HSK100A-SM075-0225				2.25				
HSK100A-SM075-0350				3.50				
HSK100A-SM075-0550				5.50				
HSK100A-SM075-0800	0.75	1.71	0.69	8.00	0.312	DK-SM075	3/8-24	SCW-SM075
HSK100A-SM075-1000				10.00				
HSK100A-SM075-1200F				12.00				
HSK100A-SM075-1500F				15.00				
HSK100A-SM100-0225				2.25				
HSK100A-SM100-0400				4.00				
HSK100A-SM100-0600				6.00				
HSK100A-SM100-0800	1.00	1.97	0.69	8.00	0.375	DK-SM100	1/2-20	SCW-SM100
HSK100A-SM100-1000				10.00				
HSK100A-SM100-1200F				12.00				
HSK100A-SM100-1500F				15.00				
HSK100A-SM125-0250				2.50				
HSK100A-SM125-0350				3.50				
HSK100A-SM125-0550	1.25	2.75	0.69	5.50	0.500	DK-SM125	5/8-18	SCW-SM125
HSK100A-SM125-0800				8.00				
HSK100A-SM150-0250				2.50				
HSK100A-SM150-0400				4.00				
HSK100A-SM150-0600	1.50	3.78	0.94	6.00	0.625	DK-SM150	3/4-16	SCW-SM150
HSK100A-SM150-0800				8.00				
HSK100A-SM200-0288				2.88				
HSK100A-SM200-0400	2.00	4.37	0.94	4.00	0.750	DK-SM200	1"-14	SCW-SM200

CAT40

CAT50

BT30

BT40

HSK 40E

HSK 63A

HSK100A

STRAIGHT SHANKS

COLLETS

PARTS & ACCESS.

SHRINK MACHINES

INDEXERS

