

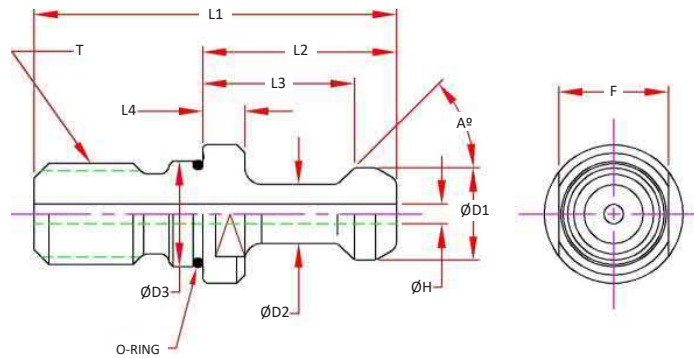
CAT50

CAT50 - High Performance Studs

Features

- Manufactured to the Industry Standards or machine builders specifications.
- Grind Finish to adhere to machine builder recommendations
- Coolant Knobs include O-ring on the thread side pilot diameter to adhere to builder recommendations

Note: It is critical that the correct retention knob is used with each machining center. Please verify all dimensions prior to ordering. Machine specifications will be located in your machine manual or contact the machine manufacturer.



| Part Number | A Angle | D1 Head | D2 Neck | D3 Pilot | L1 OAL | L2 Proj. | L3 Pull Loc. | L4 Flange | H Hole | Pilot O-Ring | F Flats | T Thread | Socket Wrench | Notes |
|--------------------|---------|---------|---------|----------|--------|----------|--------------|-----------|--------|--------------|---------|----------|---------------|----------------------------|
| HPS-C50-MAS-45-C | 45 | 0.906 | 0.669 | 1.031 | 3.354 | 1.780 | 1.386 | 0.402 | 0.236 | Yes † | | | | MAS P50T-1 |
| HPS-C50-MAS-60 | 60 | 0.906 | 0.669 | 1.024 | 3.248 | 1.772 | 1.378 | 0.394 | - | - | 30mm | | TWS-M30 | MAS P50T-2 |
| HPS-C50-MAS-60-C | 60 | 0.906 | 0.669 | 1.024 | 3.248 | 1.772 | 1.378 | 0.394 | 0.236 | Yes † | | | | MAS P50T-2 Coolant |
| HPS-C50-ANSI-C | 45 | 1.140 | 0.820 | 1.031 | 2.580 | 1.000 | 0.700 | 0.210 | 0.457 | Yes † | 1.250 | | TWS-125 | ANSI B5.50 |
| HPS-C50-MAZAK-COF | 45 | 1.140 | 0.820 | 1.031 | 2.303 | 1.000 | 0.700 | 0.197 | 0.394 | Yes † | 1.187 | | TWS-118 | Mazak 16mm C' Bore in Face |
| HPS-C50-MAZAK-C | 45 | 1.140 | 0.820 | 1.031 | 2.303 | 1.000 | 0.700 | 0.197 | 0.394 | Yes † | 1.187 | 1"-8 | TWS-118 | Mazak |
| HPS-C50-OKUMA-C | 45 | 1.140 | 0.820 | 1.031 | 2.580 | 1.000 | 0.700 | 0.210 | 0.236 | Yes † | 1.250 | | | Okuma Spec |
| HPS-C50-MAS-90 | 90 | 0.906 | 0.669 | - | 3.346 | 1.780 | 1.386 | 0.394 | - | - | | | | MAS P50T-3 Mori-Seiki |
| HPS-C50-MAS-90-C | 90 | 0.906 | 0.669 | 1.031 | 3.346 | 1.780 | 1.386 | 0.394 | 0.250 | Yes † | | | | MAS P50T-3 Coolant |
| HPS-711-45 | 75 | 1.102 | 0.827 | 1.031 | 2.913 | 1.338 | 0.984 | 0.197 | 0.468 | Yes † | 30mm | | TWS-M30 | JIS B6339 |
| HPS-C50-KITAMURA-C | 75 | 1.102 | 0.827 | 1.031 | 2.959 | 1.344 | 0.990 | 0.197 | 0.453 | Yes † | | | | Kitamura Spec |

† O-Ring added to Pilot, adheres to machine company changes, remove O-Ring if not required

CAT50 Nose Index

| | |
|--------------------|---------|
| Shrink Fit | PAGE 40 |
| Hydraulic Chuck | PAGE 44 |
| SX Collet Chuck | PAGE 42 |
| MX Collet Chuck | PAGE 43 |
| VX Collet Chuck | PAGE 43 |
| MC Mill Chuck | PAGE 45 |
| ER Collet Chuck | PAGE 46 |
| End Mill Adapters | PAGE 47 |
| TG Collet Chuck | PAGE 52 |
| Shell Mill | PAGE 50 |
| QC Tapping | PAGE 51 |
| Drill Chucks | PAGE 52 |
| Test / Runout Bars | PAGE 53 |

CAT40

CAT 50

BT30

BT40

HSK 40E

HSK 63A

HSK 100A

STRAIGHT
SHANKS

COLLETS

PARTS &
ACCESS.

SHRINK
MACHINES

INDEXERS



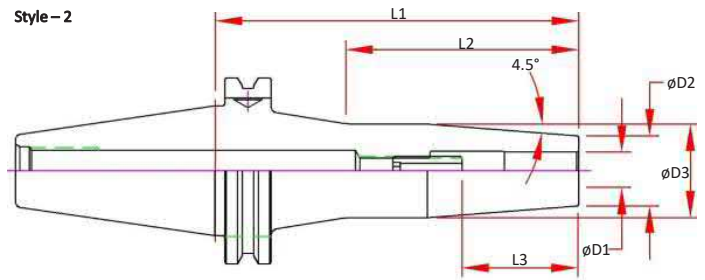
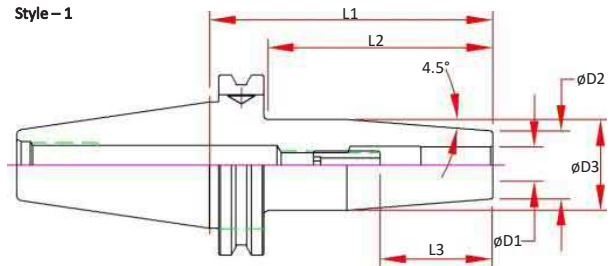
CAT50 Shrink Fit - Inch

Features

- 3 μm - 0.0001" Runout Taper to Bore
- Manufactured from ISO-40CrMoV5 (H13) Material, Heat Treated for Optimum Elasticity and Tool Life
- Coolant Thru the Center
- Tapers are ground better than AT3 for optimal T.I.R.
- Dynamically Balanced for G2.5 @ 25,000 RPM or < 1 gmm
- Preset Screw included for 1/4" & larger for positive stop
- Designed for Carbide Cutting Tools with h6 shank tolerance

Optional (Order Separately):

- Jet-Blast Coolant Ports - Add "-J"
- DIN-B Coolant - Add "-D"
- Fine Trim Balance (Sample cutter required for balance compensation)



| Part Number | D1 Bore | D2 | D3 | L1 Projection | L2 | L3 Max Tool Enters | Preset Screw | Style |
|-----------------|---------|------|------|---------------|------|--------------------|---------------|-------|
| CAT50-SD025-080 | 0.2500 | 0.83 | 1.06 | 3.15 | 2.32 | 1.46 | SCW-ASC-05-23 | 1 |
| CAT50-SD025-160 | 0.2500 | 0.83 | 1.06 | 6.30 | 2.76 | 1.46 | SCW-ASC-05-23 | 2 |
| CAT50-SD031-080 | 0.3125 | 0.83 | 1.06 | 3.15 | 2.32 | 1.46 | SCW-ASC-06-23 | 1 |
| CAT50-SD031-160 | 0.3125 | 0.83 | 1.06 | 6.30 | 2.76 | 1.46 | SCW-ASC-06-23 | 2 |
| CAT50-SD037-080 | 0.3750 | 0.94 | 1.24 | 3.15 | 2.32 | 1.65 | SCW-ASC-08-23 | 1 |
| CAT50-SD037-160 | 0.3750 | 0.94 | 1.26 | 6.30 | 2.76 | 1.65 | SCW-ASC-08-23 | 2 |
| CAT50-SD050-080 | 0.5000 | 0.94 | 1.24 | 3.15 | 2.32 | 1.65 | SCW-ASC-10-23 | 1 |
| CAT50-SD050-160 | 0.5000 | 0.94 | 1.26 | 6.30 | 2.76 | 1.65 | SCW-ASC-10-23 | 2 |
| CAT50-SD062-080 | 0.6250 | 1.06 | 1.34 | 3.15 | 2.32 | 2.01 | SCW-ASC-12-23 | 1 |
| CAT50-SD062-160 | 0.6250 | 1.06 | 1.34 | 6.30 | 2.76 | 2.01 | SCW-ASC-12-23 | 2 |
| CAT50-SD075-080 | 0.7500 | 1.30 | 1.61 | 3.15 | 2.32 | 2.09 | SCW-ASC-12-23 | 1 |
| CAT50-SD075-160 | 0.7500 | 1.30 | 1.61 | 6.30 | 3.35 | 2.09 | SCW-ASC-12-23 | 2 |
| CAT50-SD100-100 | 1.0000 | 1.73 | 2.09 | 3.94 | 3.11 | 2.32 | SCW-ASC-16-23 | 1 |
| CAT50-SD100-160 | 1.0000 | 1.73 | 2.09 | 6.30 | 3.35 | 2.32 | SCW-ASC-16-23 | 2 |
| CAT50-SD125-100 | 1.2500 | 1.73 | 2.09 | 3.94 | 3.11 | 2.48 | SCW-ASC-16-23 | 1 |
| CAT50-SD125-160 | 1.2500 | 1.73 | 2.09 | 6.30 | 3.35 | 2.48 | SCW-ASC-16-23 | 2 |

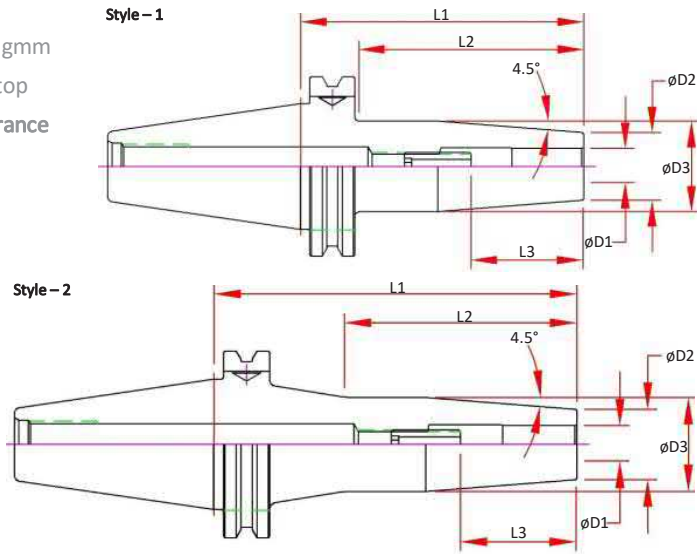
CAT50 Shrink Fit - Metric

Features

- 3 µm - 0.0001" Runout Taper to Bore
- Manufactured from ISO-40CrMoV5 (H13) Material, Heat Treated for Optimum Elasticity and Tool Life
- Coolant Thru the Center
- Tapers are ground better than AT3 for optimal T.I.R.
- Dynamically Balanced for G2.5 @ 25,000 RPM or < 1 gmm
- Preset Screw included for 1/4" & larger for positive stop
- Designed for Carbide Cutting Tools with h6 shank tolerance

Optional (Order Separately):

- Jet-Blast Coolant Ports - Add "J"
- DIN-B Coolant - Add "D"
- Fine Trim Balance (Sample cutter required for balance compensation)



| Part Number | D1 Bore | D2 | D3 | L1 Projection | L2 | L3 Max Tool Enters | Preset Screw | Style |
|-----------------|---------|----|----|---------------|----|--------------------|---------------|-------|
| CAT50-SDM06-080 | 6 | 21 | 27 | 80 | 59 | 37 | SCW-ASC-05-23 | 1 |
| CAT50-SDM06-160 | 6 | 21 | 27 | 160 | 70 | 37 | SCW-ASC-05-23 | 2 |
| CAT50-SDM08-080 | 8 | 21 | 27 | 80 | 59 | 37 | SCW-ASC-06-23 | 1 |
| CAT50-SDM08-160 | 8 | 21 | 27 | 160 | 70 | 37 | SCW-ASC-06-23 | 2 |
| CAT50-SDM10-080 | 10 | 24 | 32 | 80 | 59 | 42 | SCW-ASC-08-23 | 1 |
| CAT50-SDM10-160 | 10 | 24 | 32 | 160 | 70 | 42 | SCW-ASC-08-23 | 2 |
| CAT50-SDM12-080 | 12 | 24 | 32 | 80 | 59 | 48 | SCW-ASC-10-23 | 1 |
| CAT50-SDM12-160 | 12 | 24 | 32 | 160 | 70 | 48 | SCW-ASC-10-23 | 2 |
| CAT50-SDM16-080 | 16 | 27 | 34 | 80 | 59 | 51 | SCW-ASC-12-23 | 1 |
| CAT50-SDM16-160 | 16 | 27 | 34 | 160 | 70 | 51 | SCW-ASC-12-23 | 2 |
| CAT50-SDM20-080 | 20 | 33 | 42 | 80 | 59 | 53 | SCW-ASC-12-23 | 1 |
| CAT50-SDM20-160 | 20 | 33 | 42 | 160 | 70 | 53 | SCW-ASC-12-23 | 2 |
| CAT50-SDM25-100 | 25 | 44 | 53 | 100 | 79 | 59 | SCW-ASC-16-23 | 1 |
| CAT50-SDM25-160 | 25 | 44 | 53 | 160 | 85 | 59 | SCW-ASC-16-23 | 2 |
| CAT50-SDM32-100 | 32 | 44 | 53 | 100 | 79 | 63 | SCW-ASC-16-23 | 1 |
| CAT50-SDM32-160 | 32 | 44 | 53 | 160 | 85 | 63 | SCW-ASC-16-23 | 2 |

CAT40

CAT 50

BT30

BT40

HSK 40E

HSK 63A

HSK 100A

STRAIGHT SHANKS

COLLETS

PARTS & ACCESS.

SHRINK MACHINES

INDEXERS



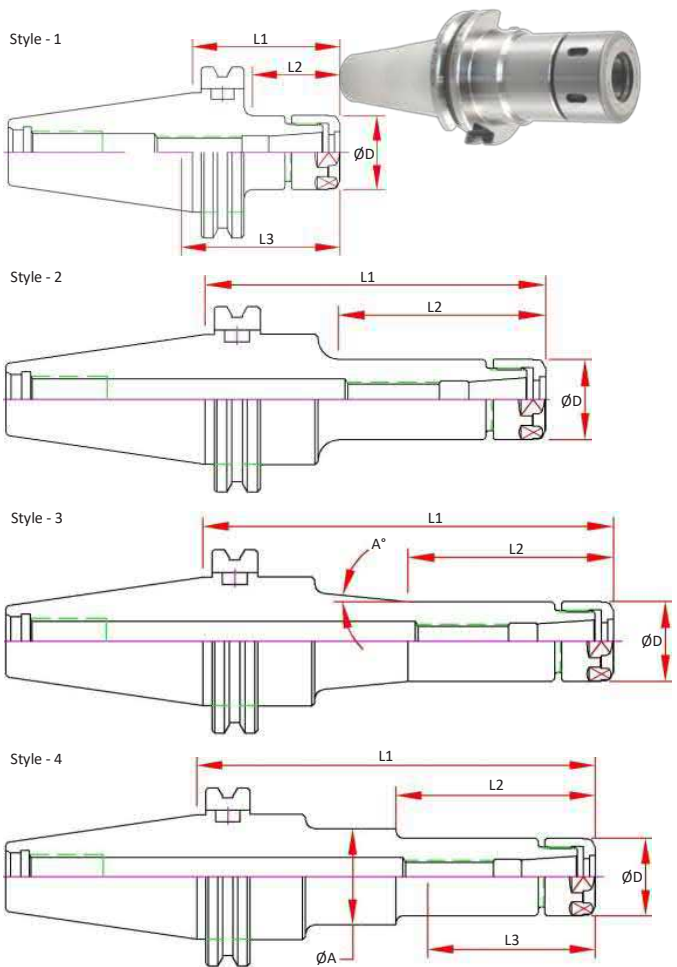
CAT50 SX Collet Chucks

Features

- 3 μm - 0.0001" Runout Taper to Taper
- Coolant Thru Body
- Dynamically Pre-Balanced G2.5 @ 25,000 RPM or <1gmm

Optional (Order Separately):

- Wrench
- Torque Wrench
- Collets
 - 0.005mm (0.0002") Standard
 - 0.003mm (0.0001") Ultra Precision
- DIN-B Coolant
- Fine Trim Balance (Sample cutter required for balance compensation)



| Max Capacity | Dual Contact Spindle Part Number | Standard Spindle Part Number | Style | Flange Coolant | A | B | D | L Projection | L2 Max. Preset | Collet | Nut | Wrench |
|--------------|----------------------------------|------------------------------|-------|----------------|-------|------|------|--------------|----------------|--------|---------|------------|
| 0.250 | CAT50-SX06-0413-B | CAT50-SX06-0413 | 1 | | - | | | 4.13 | 2.11 | | | |
| | CAT50-SX06-0531-B | CAT50-SX06-0531 | 4 | Optional | Ø32mm | 2.36 | 0.77 | 5.31 | 2.11 | SX06 | SXN-06 | SXW-06 |
| | CAT50-SX06-0650-B | CAT50-SX06-0650 | 4 | Add -D | Ø32mm | | | 6.50 | 2.11 | | | |
| | CAT50-SX06-0800-B | | 4 | | Ø30mm | | | 8.00 | 1.37 | | | |
| 0.394 | CAT50-SX10-0413-B | CAT50-SX10-0413 | 1 | | - | 2.36 | | 4.13 | 3.05 | | | |
| | CAT50-SX10-0531-B | CAT50-SX10-0531 | 4 | Optional | Ø32mm | 2.95 | 1.08 | 5.31 | 3.05 | SX10 | SXN-10 | SXW-10 |
| | CAT50-SX10-0650-B | CAT50-SX10-0650 | 4 | Add -D | Ø32mm | 2.95 | | 6.50 | 2.71 | | | |
| | CAT50-SX10-0800-B | | 4 | | Ø40mm | 2.95 | | 8.00 | 2.71 | | | |
| 0.630 | CAT50-SX16-0413-B | CAT50-SX16-0413 | 1 | | - | 2.56 | | 4.13 | | | | |
| | CAT50-SX16-0531-B | CAT50-SX16-0531 | 1 | Optional | - | 3.54 | 1.58 | 5.31 | | SX16 | SXN-16 | SXW-16 |
| | CAT50-SX16-0650-B | CAT50-SX16-0650 | 3 | Add -D | 8.27° | 3.54 | | 6.50 | 3.15 | | | |
| | CAT50-SX16-0800-B | | 3 | | 3.88° | 3.54 | | 8.00 | | | | |
| 1.000 | CAT50-SX25M-0413-B | CAT50-SX25M-0413 | 1 | | - | 2.56 | | 4.13 | 3.87 | | | |
| | CAT50-SX25M-0531-B | CAT50-SX25M-0531 | 1 | Optional | - | 3.74 | 1.97 | 5.31 | 3.87 | SX25 | SXN-25M | 50-55 HOOK |
| | CAT50-SX25M-0650-B | CAT50-SX25M-0650 | 1 | Add -D | - | 4.92 | | 6.50 | 3.80 | | | |
| | CAT50-SX25M-0800-B | CAT50-SX25M-0800 | 1 | | - | 6.10 | | 8.00 | 3.87 | | | |

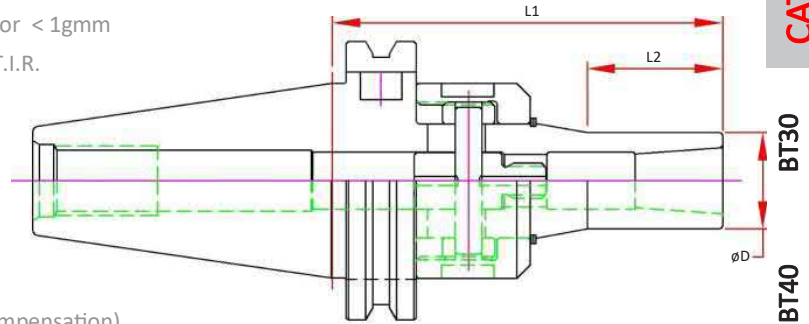
CAT50 VX - Mini Chuck

Features

- 3 μm - 0.0001" Runout @ 4X Diameter
- Front Locking System
- Coolant Thru
- Dynamically Pre-Balanced G2.5 @ 25,000 RPM or < 1gmm
- Tapers are ground better than AT3 for optimal T.I.R.

Optional (Order Separately):

- Wrench
- Torque Wrench
- Collets, STD and Jet-Blast
- DIN-B Flange Coolant
- Fine Trim Balance
(Sample cutter required for balance compensation)



| Dual Contact Spindle Part Number | Standard Spindle Part Number | Collet Range | D | L1 Projection | L2 | Collet | Wrench | Locking Torque Max. |
|----------------------------------|------------------------------|---------------|-------|---------------|------|--------|-----------|---------------------|
| CAT50-VX08-0413-B | CAT50-VX08-0413 | 0.125 - 0.394 | 0.787 | 4.13 | 1.21 | MX08 | 45-48 PIN | 30 ft/lbs |
| CAT50-VX08-0654-B | CAT50-VX08-0654 | | | 6.54 | | | | |
| CAT50-VX12-0457-B | CAT50-VX12-0457 | 0.157 - 0.500 | 1.00 | 4.57 | 2.03 | MX12 | | |
| CAT50-VX12-0654-B | CAT50-VX12-0654 | | | 6.54 | | | | |

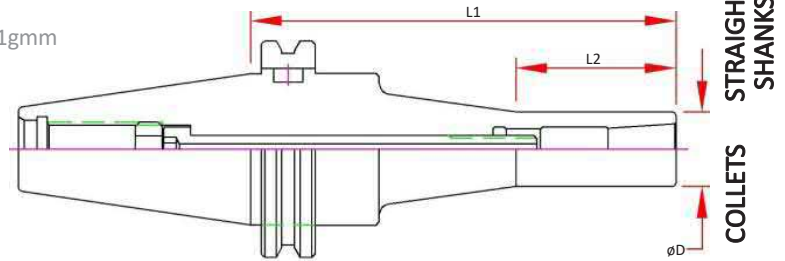
CAT50 MX - Mini Chuck

Features

- 3 μm - 0.0001" Runout @ 4X Diameter
- Rear Draw Bolt Locking System
- Coolant Thru
- Dynamically Pre-Balanced G2.5 @ 25,000 RPM or < 1gmm
- Tapers are ground better than AT3 for optimal T.I.R.

Optional (Order Separately):

- Wrench
- Torque Wrench
- Collets, STD and Jet-Blast
- DIN-B Flange Coolant
- Fine Trim Balance
(Sample cutter required for balance compensation)



| Dual Contact Spindle Part Number | Standard Spindle Part Number | Collet Range | D | L1 Projection | L2 | Collet | Wrench | Locking Torque Max. |
|----------------------------------|------------------------------|---------------|-------|---------------|------|--------|--------|---------------------|
| CAT50-MX08-110-B | CAT50-MX08-110 | 0.125 - 0.394 | 0.787 | 4.33 | 1.42 | MX08 | MXW05 | 20 ft/lbs |
| CAT50-MX08-165-B | CAT50-MX08-165 | | | 6.50 | | | | |
| CAT50-MX12-105-B | CAT50-MX12-105 | 0.157 - 0.500 | 1.00 | 4.13 | 1.38 | MX12 | | |
| CAT50-MX12-165-B | CAT50-MX12-165 | | | 6.50 | | | | |



CAT40

CAT 50

BT30

BT40

HSK 40E

HSK 63A

HSK 100A

STRAIGHT SHANKS

COLLETS

PARTS & ACCESS.

SHRINK MACHINES

INDEXERS

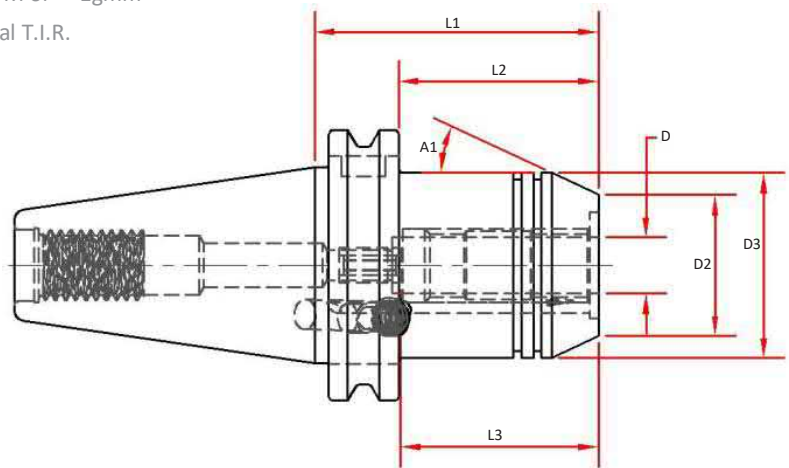
CAT50 Hydraulic Chucks

Features

- * 3 μm - 0.0001" or less run-out providing premium performance in drilling and reaming applications
- Positive Locking System
- Coolant Thru the Center
- Designed for Tool Shanks w/ ISO h6 Class Tolerance
- Dynamically Pre-Balanced G2.5 @ 25,000 RPM or < 1gmm
- Tapers are ground better than AT3 for optimal T.I.R.

Optional (Order Separately):

- Wrench
- Sealed Collets
- Mill Chuck Collets



| Part Number | D Bore | D2 | D3 | A1 | L1 Projection | L2 | L3 Max Tool Enters | Wrench |
|------------------|--------|------|------|-------|---------------|------|--------------------|--------|
| CAT50-HC075-0319 | 0.7500 | 1.50 | 1.94 | 25° | 3.19 | 2.44 | 2.01 | MXW05 |
| CAT50-HC125-0319 | 1.2500 | 2.30 | 2.83 | 18.7° | 3.19 | 2.44 | 2.40 | MXW05 |

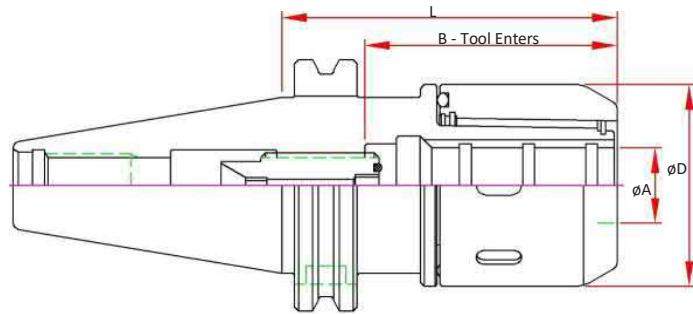
CAT50 Mill Chucks

Features

- 5 μm - 0.0002" Runout @ 4 x Cutter Shank Dia.
- Designed for Tool Shanks w/ ISO h6 Class Tolerance
- Tapers are ground better than AT3 for optimal T.I.R.
- Pre-Balanced for use @ 15,000 RPM

Optional (Order Separately):

- Wrench
- Nylon Screw Seal for short tool shanks
- DIN-B Flange Coolant
- Fine Trim Balance (Sample cutter required for balance compensation)



| Part Number | A Bore | B Max. Tool Enters | D | L Projection | Preset Screw | Collet | Wrench |
|------------------|--------|--------------------|------|--------------|--------------|--------|------------|
| CAT50-MC075-0354 | 0.7500 | 2.76 | 2.09 | 3.54 | ASC-16-40 | MC075 | 50-55 HOOK |
| CAT50-MC075-0413 | | | | 4.13 | | | |
| CAT50-MC075-0531 | | | | 5.31 | | | |
| CAT50-MC075-0650 | | | | 6.50 | | | |
| CAT50-MC100-0315 | 1.0000 | 2.95 | 2.44 | 3.15 | ASC-16-40 | MC100 | 58-65 HOOK |
| CAT50-MC100-0354 | | | | 3.54 | | | |
| CAT50-MC100-0413 | | | | 4.13 | | | |
| CAT50-MC100-0531 | | | | 5.31 | | | |
| CAT50-MC100-0650 | | | | 6.50 | | | |
| CAT50-MC125-0354 | 1.2500 | 3.23 | 2.76 | 3.54 | ASC-16-40 | MC125 | 65-70 HOOK |
| CAT50-MC125-0413 | | | | 4.13 | | | |
| CAT50-MC125-0531 | | | | 5.31 | | | |
| CAT50-MC125-0650 | | | | 6.50 | | | |



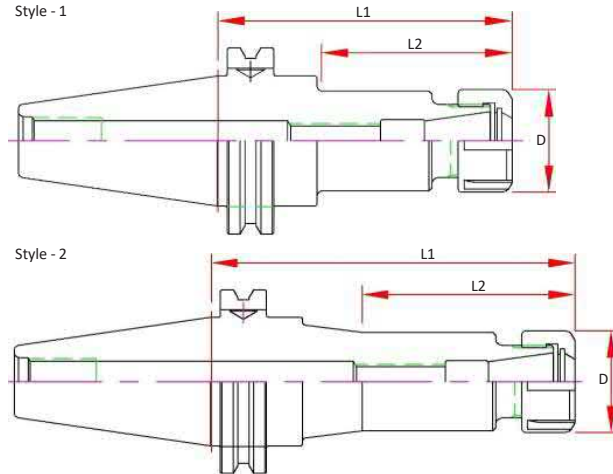
CAT50 ER Collet Chucks

Features

- 3 µm - 0.0001" Runout Taper to Taper
- Coolant Thru Body
- Dynamically Pre-Balanced G6.3 @ 15,000 RPM or <1gmm
- Tapers are ground better than AT3 for optimal T.I.R.

Optional (Order Separately):

- Wrench
- Torque Wrench
- Collets
 - 0.010mm (0.0004") Standard
 - 0.005mm (0.0002") Ultra Precision
 - Sealed (Select Sizes)
 - Jet-Blast (Select Sizes)
- DIN-B Coolant (Select models)



| Dual Contact Spindle Part Number | Standard Spindle Part Number | Range | L2 | D | L1 Projection | Screw | Nut | Wrench | Style |
|----------------------------------|------------------------------|------------|-------|------|---------------|----------|---------|---------|-------|
| | CAT50-ER16H-0250 | .019-.394 | 1.55 | 1.10 | 2.50 | ASC-ER16 | ERN-16H | ERW-16H | 1 |
| | CAT50-ER16H-0400 | | 2.42 | | 4.00 | | | | 1 |
| | CAT50-ER16H-0600 | | 2.39 | | 6.00 | | | | 2 |
| | CAT50-ER16H-0800 | | 2.39 | | 8.00 | | | | 2 |
| | CAT50-ER16H-1000 | | 2.39 | | 10.00 | | | | 2 |
| | CAT50-ER16H-1200 | | 2.39 | | 12.00 | | | | 2 |
| | CAT50-ER20H-0250 | .019-.512 | 1.55 | 1.33 | 2.50 | ASC-ER20 | ERN-20H | ERW-20H | 1 |
| CAT50-ER20H-0400-B | CAT50-ER20H-0400 | | 2.42 | | 4.00 | | | | 1 |
| CAT50-ER20H-0600-B | CAT50-ER20H-0600 | | 2.42 | | 6.00 | | | | 2 |
| | CAT50-ER20H-0800 | | 2.42 | | 8.00 | | | | 2 |
| | CAT50-ER20H-1500 | | 3.40 | | 15.00 | | | | 2 |
| | CAT50-ER25-0250 | | 1.55 | | 2.50 | | | | 1 |
| | CAT50-ER25-0400 | .019-.630 | 2.42 | 1.65 | 4.00 | ASC-ER25 | ERN-25 | ERW-25E | 1 |
| | CAT50-ER25-0600 | | 4.42 | | 6.00 | | | | 1 |
| | CAT50-ER25-0800 | | 2.44 | | 8.00 | | | | 2 |
| | CAT50-ER25-1500 | | 3.42 | | 15.00 | | | | 2 |
| | CAT50-ER32-0250 | .039-.787 | 1.71 | 1.96 | 2.50 | ASC-ER32 | ERN-32 | ERW-32E | 1 |
| CAT50-ER32-0400-B | CAT50-ER32-0400 | | 2.50 | | 4.00 | | | | 1 |
| CAT50-ER32-0600-B | CAT50-ER32-0600 | | 4.50 | | 6.00 | | | | 1 |
| | CAT50-ER32-0800 | | 6.50 | | 8.00 | | | | 1 |
| CAT50-ER32-1000-B | CAT50-ER32-1000 | | 4.45 | | 10.00 | | | | 2 |
| CAT50-ER32-1200-B | CAT50-ER32-1200 | | 4.45 | | 12.00 | | | | 2 |
| | CAT50-ER32-1500 | 4.45 | 15.00 | 2 | | | | | |
| CAT50-ER40-0400-B | CAT50-ER40-0400 | .079-1.024 | 2.54 | 2.48 | 4.00 | ASC-ER40 | ERN-40 | ERW-40E | 1 |
| | CAT50-ER40-0500 | | | | 5.00 | | | | 1 |
| CAT50-ER40-0600-B | CAT50-ER40-0600 | | 4.54 | | 6.00 | | | | 1 |
| | CAT50-ER40-0800 | | 6.54 | | 8.00 | | | | 1 |

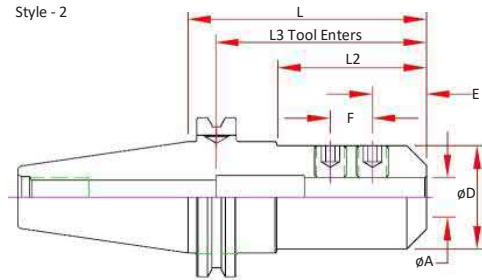
CAT50 End Mill Adapters—Metric

Features

- 3 μm - 0.0001" Bore Runout
- H5 Bore Tolerance or better
- Tapers are ground better than AT3 for optimal T.I.R.
- Coolant Thru
- Pre-Balanced for use @ 20,000 RPM (CAT50 @ 15,000 RPM)

Optional (Order Separately):

- Jet-Blast (add "J" to the part number)
- DIN-B Coolant (Select models)



| Standard Spindle Part Number | A Bore | D | E | F | L Projection | L2 | L3 Max. Tool Enters | Screw # | Style |
|------------------------------|--------|------|------|------|--------------|------|---------------------|---------|-------|
| CAT50-EMM20-0400 | 20mm | 1.75 | 1 | - | 4.00 | 2.5 | 6.25 | 8 | 2 |
| CAT50-EMM25-0400 | 25mm | 2.00 | 0.94 | 0.98 | 4.00 | 2.50 | 4.45 | (2) 10 | 2 |
| CAT50-EMM32-0400 | 32mm | 2.50 | 0.94 | 1.10 | 4.00 | 2.50 | 3.35 | (2) 11 | 2 |

CAT40

CAT 50

BT30

BT40

HSK 40E

HSK 63A

HSK 100A

STRAIGHT SHANKS

COLLETS

PARTS & ACCESS.

SHRINK MACHINES

INDEXERS



CAT50 End Mill Adapters

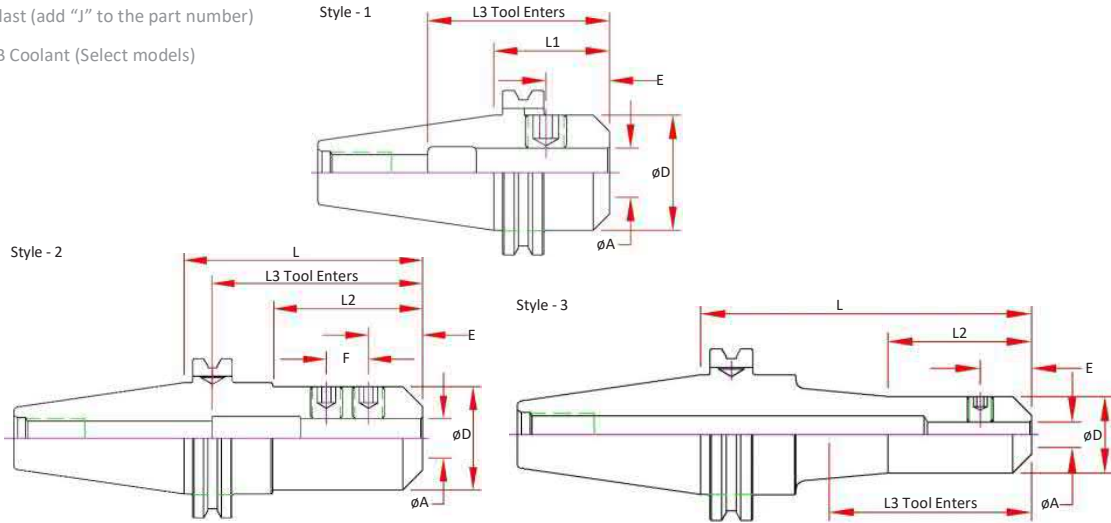
Features

- 3 µm - 0.0001" Bore Runout
- H5 Bore Tolerance or better
- Tapers are ground better than AT3 for optimal T.I.R.
- Coolant Thru
- Pre-Balanced for use @ 15,000 RPM



Optional (Order Separately):

- Jet-Blast (add "J" to the part number)
- DIN-B Coolant (Select models)



| | Dual Contact Spindle Part Number | Standard Spindle Part Number | A Bore | D | E | F | L Projection | L2 | L3 Max. Tool Enters | Screw Number | Style | | |
|------|----------------------------------|------------------------------|--------|------|------|---|------------------|-------|---------------------|--------------|-------|---|---|
| 1/8 | | CAT50-EM012-0250 | 0.1250 | 0.69 | 0.19 | - | 2.50 | 0.92 | 4.75 | 3 | 2 | | |
| | | CAT50-EM012-0531 | | | | | 5.31 | 1.57 | 7.56 | | 3 | | |
| 3/16 | | CAT50-EM018-0250 | 0.1875 | 0.69 | 0.44 | - | 2.50 | 0.92 | 4.75 | 3 | 2 | | |
| | | CAT50-EM018-0531 | | | | | 5.31 | 1.57 | 7.56 | | 3 | | |
| 1/4 | | CAT50-EM025-0250 | 0.2500 | 0.79 | 0.44 | - | 2.50 | 0.92 | 4.75 | 4 | 2 | | |
| | | CAT50-EM025-0400 | | | | | 4.00 | 2.42 | 6.25 | | 4 | 2 | |
| | | CAT50-EM025-0600 | | | | | 6.00 | 1.57 | 8.25 | | 3 | | |
| 5/16 | | CAT50-EM031-0400 | 0.3125 | 0.88 | 0.44 | - | 4.00 | 2.42 | 6.25 | 4 | 2 | | |
| | | CAT50-EM031-0600 | | | | | 6.00 | 1.57 | 8.25 | | 4 | 3 | |
| | | CAT50-EM037-0250 | | | | | 2.50 | 1.00 | 4.75 | | 2 | | |
| 3/8 | | CAT50-EM037-0300 | 0.3750 | 1.00 | 0.75 | - | 3.00 | 1.42 | 5.25 | 5 | 2 | | |
| | | CAT50-EM037-0400 | | | | | 4.00 | 2.42 | 6.25 | | 5 | 2 | |
| | | CAT50-EM037-0600 | | | | | 6.00 | 3.00 | 8.25 | | 3 | | |
| | | CAT50-EM037-0800 | | | | | 8.00 | 3.00 | 10.25 | | 3 | | |
| | | CAT50-EM050-0262 | | | | | 2.62 | 1.20 | 4.87 | | 2 | | |
| 1/2 | | CAT50-EM050-0300 | 0.5000 | 1.25 | 0.88 | - | 3.00 | 1.42 | 5.25 | 6 | 2 | | |
| | | CAT50-EM050-0400-B | | | | | CAT50-EM050-0400 | 4.00 | 2.42 | | 6.25 | 2 | |
| | | CAT50-EM050-0462 | | | | | CAT50-EM050-0462 | 4.62 | 3.04 | | 6.87 | 2 | |
| | | CAT50-EM050-0600-B | | | | | CAT50-EM050-0600 | 6.00 | 3.13 | | 8.25 | 6 | 3 |
| | | CAT50-EM050-0662 | | | | | CAT50-EM050-0662 | 6.62 | 3.13 | | 8.87 | 3 | |
| | | CAT50-EM050-0800 | | | | | CAT50-EM050-0800 | 8.00 | 3.13 | | 10.25 | 3 | |
| | | CAT50-EM050-1000 | | | | | CAT50-EM050-1000 | 10.00 | 3.13 | | 12.25 | 3 | |
| | | CAT50-EM050-1200 | | | | | CAT50-EM050-1200 | 12.00 | 3.13 | | 14.25 | 3 | |
| 5/8 | | CAT50-EM062-0300 | 0.6250 | 1.50 | 0.94 | - | 3.00 | 1.50 | 5.25 | 7 | 2 | | |
| | | CAT50-EM062-0400-B | | | | | CAT50-EM062-0400 | 4.00 | 2.50 | | 6.25 | 2 | |
| | | CAT50-EM062-0600 | | | | | CAT50-EM062-0600 | 6.00 | 4.42 | | 8.25 | 2 | |
| | | CAT50-EM062-0775 | | | | | CAT50-EM062-0775 | 7.75 | 4.25 | | 10.00 | 3 | |

CAT50 End Mill Adapters

Features

- 3 µm - 0.0001" Bore Runout
- H5 Bore Tolerance or better
- Tapers are ground better than AT3 for optimal T.I.R.
- Coolant Thru
- Pre-Balanced for use @ 15,000 RPM

Optional (Order Separately):

- Jet-Blast (add "J" to the part number)
- DIN-B Coolant (Select models)



CAT40

CAT 50

BT30

BT40

HSK 40E

HSK 63A

HSK 100A

STRAIGHT SHANKS

COLLETS

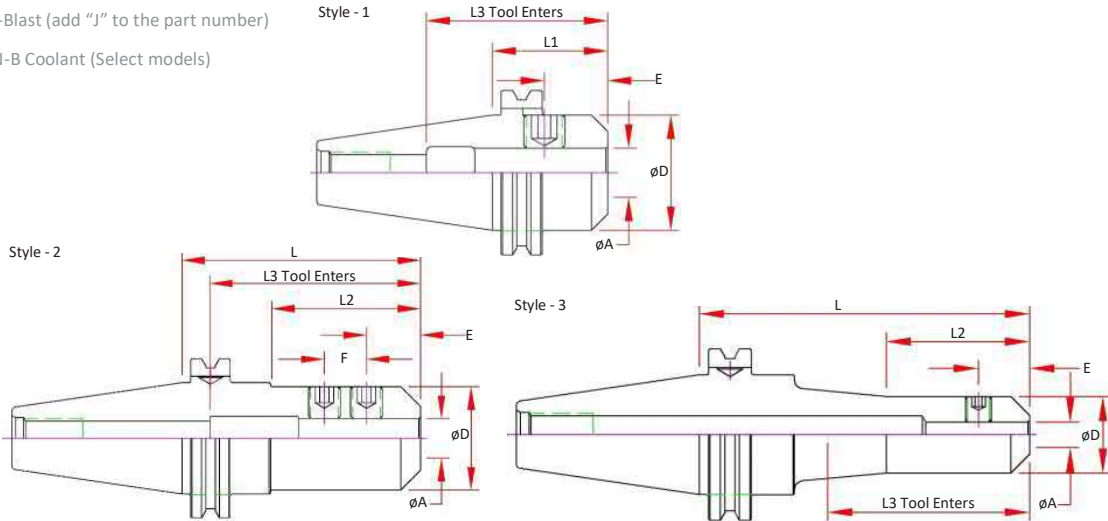
PARTS & ACCESS.

SHRINK MACHINES

INDEXERS



P-38



| Dual Contact Spindle Part Number | Standard Spindle Part Number | A Bore | D | E | F | L Projection | L2 | L3 Max. Tool Enters | Screw Number | Style |
|----------------------------------|------------------------------|--------|------|------|------|--------------|------|---------------------|--------------|-------|
| | CAT50-EM075-0175 | 0.7500 | 1.75 | 1.00 | - | 1.75 | 0.25 | 2.76 | 8 | 1 |
| | CAT50-EM075-0300 | | | | | 3.00 | 1.50 | 3.86 | | 2 |
| | CAT50-EM075-0375 | | | | | 3.75 | 2.25 | 4.00 | | 2 |
| 3/4 | CAT50-EM075-0400-B | | | | | 4.00 | 2.50 | 3.94 | | 2 |
| | CAT50-EM075-0600-B | | | | | 6.00 | 1.96 | 3.94 | | 3 |
| | CAT50-EM075-0800 | | | | | 8.00 | 1.96 | 3.94 | | 3 |
| | CAT50-EM075-1000 | | | | | 10.00 | 1.96 | 3.94 | | 3 |
| | CAT50-EM075-1200 | | | | | 12.00 | 1.96 | 3.94 | | 3 |
| 7/8 | CAT50-EM087-0350 | 0.8750 | 1.88 | 1.00 | 0.81 | 3.50 | 2.00 | 4.19 | 8 | 2 |
| | CAT50-EM100-0162 | 1.0000 | 2.00 | 1.12 | - | 1.62 | 0.62 | 2.50 | 10 | 1 |
| | CAT50-EM100-0300 | | | 1.12 | - | 3.00 | 1.50 | 4.44 | 10 | 2 |
| 1 | CAT50-EM100-0400-B | | | 1.12 | 1.00 | 4.00 | 2.54 | 4.44 | (2) 10 | 2 |
| | CAT50-EM100-0600-B | | | 1.12 | 1.00 | 6.00 | 4.50 | 4.44 | (2) 10 | 2 |
| | CAT50-EM100-0800 | | | 1.12 | 1.00 | 8.00 | 6.50 | 4.44 | (2) 10 | 2 |
| | CAT50-EM100-1000 | | | 1.12 | 1.00 | 10.00 | 4.50 | 4.44 | (2) 10 | 3 |
| | CAT50-EM125-0200 | 1.2500 | 2.50 | 1.12 | - | 2.00 | 1.20 | 3.50 | 11 | 1 |
| | CAT50-EM125-0300 | | | 1.12 | 1.00 | 3.00 | 2.20 | 3.50 | (2) 11 | 1 |
| 1 1/4 | CAT50-EM125-0400-B | | | 1.12 | 1.00 | 4.00 | 2.58 | 3.35 | (2) 11 | 2 |
| | CAT50-EM125-0600-B | | | 1.12 | 1.00 | 6.00 | 4.58 | 3.35 | (2) 11 | 2 |
| | CAT50-EM125-0800 | | | 1.12 | 1.00 | 8.00 | 6.58 | 3.35 | (2) 11 | 2 |
| | CAT50-EM125-1000 | | | 1.12 | 1.00 | 10.00 | 8.58 | 3.35 | (2) 11 | 2 |
| | CAT50-EM150-0225 | 1.5000 | 2.75 | 1.50 | - | 2.25 | 1.45 | 2.44 | 11 | 1 |
| 1 1/2 | CAT50-EM150-0400-B | | | 1.12 | 1.00 | 4.00 | 3.20 | 4.50 | (2) 11 | 2 |
| | CAT50-EM150-0600-B | | | 1.12 | 1.00 | 6.00 | 5.20 | 4.50 | (2) 11 | 2 |
| | CAT50-EM150-1000 | | | 1.12 | 1.00 | 10.00 | 9.20 | 4.50 | (2) 11 | 2 |
| | CAT50-EM200-0362 ** | 2.0000 | 3.75 | 1.41 | 1.50 | 3.62 | 2.82 | 3.66 | 12 & 13 | 2 |
| 2 | CAT50-EM200-0562-B | | | | | 5.62 | 4.86 | 4.13 | (2) 13 | 2 |

** No DIN AD+B Option Available - No ANSI Safety Area due to bore size. Check Tool Change Clearance prior to ordering.



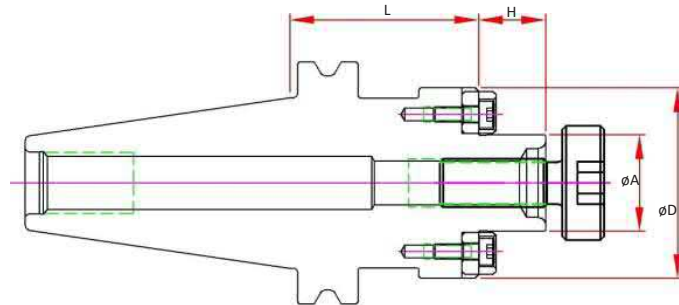
CAT50 Shell Mill Adapters

Features

- 3 µm - 0.0001" Bore Runout
- H5 Bore Tolerance or better
- Tapers are ground better than AT3 for optimal T.I.R.
- Coolant Thru Body
- Pre-Balanced for use @ 20,000 RPM

Optional (Order Separately):

- FX Coolant (add "F" to the part number)
- DIN-B Coolant (Select models)



| Dual Contact Spindle Part Number | Standard Spindle Part Number | A Pilot | D | H | L Projection | Drive Key Size | Drive Key Number | Mounting Screw Thread | Mounting Screw# |
|----------------------------------|------------------------------|---------|------|------|--------------|----------------|------------------|-----------------------|-----------------|
| CAT50-SM075-0150-B | CAT50-SM075-0150 | | | | 1.50 | | | | |
| CAT50-SM075-0350-B | CAT50-SM075-0350 | | | | 3.50 | | | | |
| CAT50-SM075-0550-B | CAT50-SM075-0550 | | | | 5.50 | | | | |
| CAT50-SM075-0800-B | CAT50-SM075-0800 | 0.75 | 1.75 | 0.69 | 8.00 | 0.312 | DK-SM075 | 3/8-24 | SCW-SM075 |
| CAT50-SM075-1000-B-F** | CAT50-SM075-1000F** | | | | 10.00 | | | | |
| CAT50-SM075-1200-B-F** | CAT50-SM075-1200F** | | | | 12.00 | | | | |
| | CAT50-SM075-1500F** | | | | | | | | |
| CAT50-SM100-0200-B | CAT50-SM100-0200 | | | | 2.00 | | | | |
| CAT50-SM100-0400-B | CAT50-SM100-0400 | | | | 4.00 | | | | |
| CAT50-SM100-0600-B | CAT50-SM100-0600 | 1.00 | 1.97 | 0.69 | 6.00 | 0.375 | DK-SM100 | 1/2-20 | SCW-SM100 |
| CAT50-SM100-0800-B | CAT50-SM100-0800 | | | | 8.00 | | | | |
| | CAT50-SM100-1200F** | | | | 12.00 | | | | |
| | CAT50-SM100-1500F** | | | | 15.00 | | | | |
| | CAT50-SM125-0150 | | | | 1.50 | | | | |
| CAT50-SM125-0350-B | CAT50-SM125-0350 | | | | 3.50 | | | | |
| CAT50-SM125-0550-B | CAT50-SM125-0550 | | | | 5.50 | | | | |
| | CAT50-SM125-0800 | 1.25 | 2.75 | 0.69 | 8.00 | 0.500 | DK-SM125 | 5/8-18 | SCW-SM125 |
| | CAT50-SM125-1000F** | | | | | | | | |
| | CAT50-SM125-1200F** | | | | 12.00 | | | | |
| | CAT50-SM125-1500F** | | | | 15.00 | | | | |
| CAT50-SM150-0240-B | CAT50-SM150-0240 | | | | 2.40 | | DK-SM150-C | | |
| CAT50-SM150-0400-B | CAT50-SM150-0400 | | | | 4.00 | | DK-SM150 | | |
| CAT50-SM150-0600-B | CAT50-SM150-0600 | 1.50 | 3.82 | 0.94 | 6.00 | 0.625 | DK-SM150 | 3/4-16 | SCW-SM150 |
| CAT50-SM150-0800-B | CAT50-SM150-0800 | | | | 8.00 | | DK-SM150 | | |
| CAT50-SM200-0400-B | CAT50-SM200-0400 | 2.00 | 4.37 | 0.94 | 4.00 | 0.750 | DK-SM200 | 1"-14 | SCW-SM200 |

** Stocked in "FX" Coolant Style Only

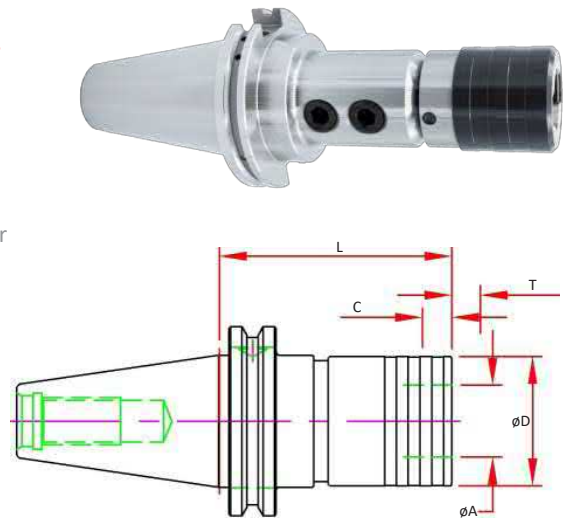
TC - Tension & Compression Holders

Features

- Tension and Compression Stroke for improved tap life
- Pressure Point Mechanism to increase the cutting pressure and ensure a positive start
- Size 3 includes pull to release system to prevent damage from over stroke
- TC Holders are not designed for Coolant Thru
- For use with both RA and TC adapters
 - TC for machines with limited "Z" control
- 2 Piece Design is assembled Straight Shank Tap Holder with End Mill Adapter
- Tapers are ground better than AT3 for optimal T.I.R.



| Size | Dual Contact Spindle Part Number | Standard Spindle Part Number | 2 Piece Design | Capacity | A | D | L | T | C |
|------|----------------------------------|------------------------------|----------------|------------|------|------|------|------|------|
| 1 | | CAT50-TC1-0320 | Y | #6-9/16 | 0.75 | 1.42 | 3.20 | 0.30 | 0.30 |
| 1 | CAT50-TC1-0558-B | CAT50-TC1-0558 | Y | #6-9/16 | 0.75 | 1.42 | 5.58 | 0.30 | 0.30 |
| 2 | | CAT50-TC2-0418 | Y | 5/16-7/8 | 1.22 | 2.09 | 4.18 | 0.49 | 0.49 |
| 2 | CAT50-TC2-0636-B | CAT50-TC2-0636 | Y | 5/16-7/8 | 1.22 | 2.09 | 6.36 | 0.49 | 0.49 |
| 3 | | CAT50-TC3-0704 | Y | 9/16-1-3/8 | 1.89 | 3.07 | 7.04 | 0.79 | 0.79 |
| 3 | CAT50-TC3-0904-B | CAT50-TC3-0904 | Y | 9/16-1-3/8 | 1.89 | 3.07 | 9.04 | 0.79 | 0.79 |



CAT40

CAT 50

BT30

BT40

HSK 40E

HSK 63A

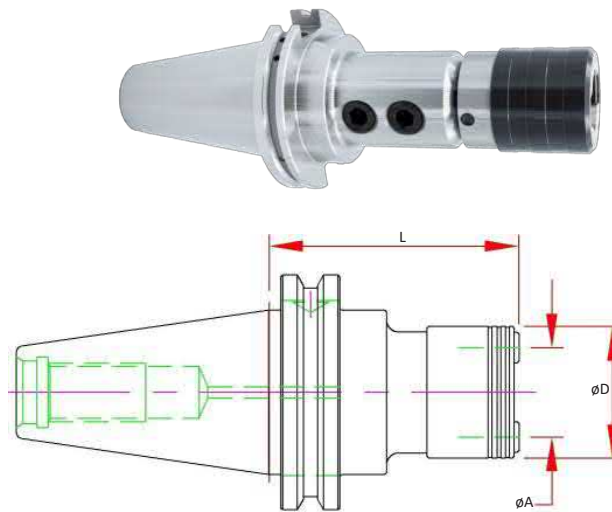
RT - Rigid QC Tap Holders

Features

- Body - Coolant Thru Center
- Tapers are ground better than AT3 for optimal T.I.R.
- **For use with RA Adapters Only!**



| Size | Dual Contact Spindle Part Number | Standard Spindle Part Number | 2 Piece Design | Capacity | A | D | L Projection |
|------|----------------------------------|------------------------------|----------------|------------|------|------|--------------|
| 1 | | CAT50-RT1-320 | Y | #6-9/16 | 0.75 | 1.34 | 3.20 |
| 1 | CAT50-RT1-0557-B | CAT50-RT1-0557 | Y | #6-9/16 | 0.75 | 1.34 | 5.57 |
| 2 | | CAT50-RT2-0399 | Y | 5/16-7/8 | 1.22 | 1.93 | 3.99 |
| 2 | CAT50-RT2-0636-B | CAT50-RT2-0636 | Y | 5/16-7/8 | 1.22 | 1.93 | 6.36 |
| 3 | | CAT50-RT3-0575 | Y | 9/16-1-3/8 | 1.89 | 2.89 | 5.75 |
| 3 | CAT50-RT3-0774-B | CAT50-RT3-0774 | Y | 9/16-1-3/8 | 1.89 | 2.89 | 7.74 |



HSK 100A

STRAIGHT SHANKS

COLLETS

PARTS & ACCESS.

SHRINK MACHINES

INDEXERS



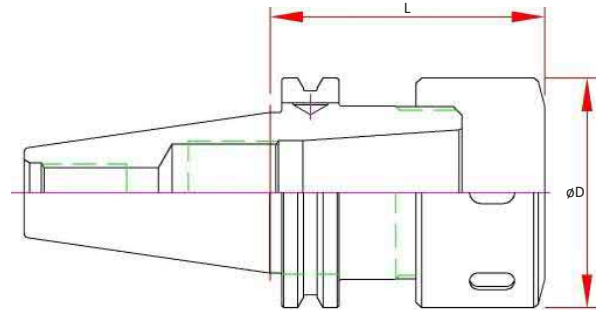
TG - Collet Chuck

Features

- 3 μm - 0.0001" Runout Taper to Taper
- Coolant Thru Body
- Dynamically Pre-Balanced @ 20,000 RPM (CAT50 @ 15,000 RPM)
- Tapers are ground better than AT3 for optimal T.I.R.

Optional (Order Separately):

- Wrench
- Torque Wrench
- Collets
- DIN-B Coolant (Select models)

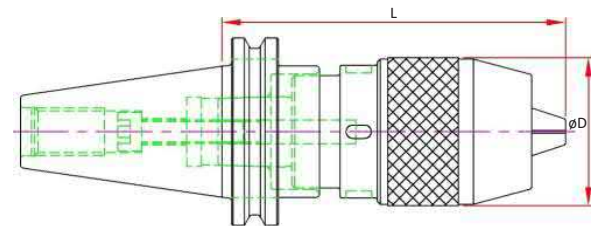


| Part Number | Range | D | L Projection | Collet | Screw | Nut | Wrench |
|------------------|-------------|------|--------------|--------|----------|--------|------------|
| CAT50-TG100-0350 | .094 - 1.00 | 2.48 | 3.50 | TG100 | ASC-ER40 | TGN100 | 58-65 HOOK |
| CAT50-TG100-0550 | | | 5.50 | | | | |

DC - Drill Chuck

Features:

- Non Coolant
- Keyless w/ slots for spanner wrench (sold separately)

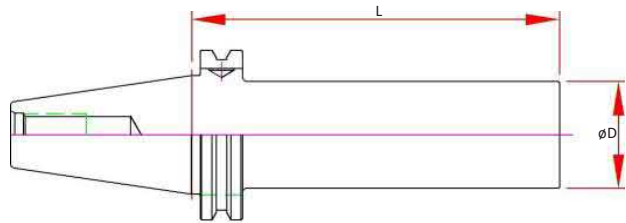


| Part Number | Range | D | L Projection | Wrench |
|------------------|-------------|------|--------------|--------|
| CAT50-DC050-0394 | 0.04 - 0.50 | 1.96 | 3.94 | DCW13 |

TB - Test Bar

Features

- Concentric to Taper within 3µm (0.0001”) TIR
- Tapers are ground better than AT3 for optimal T.I.R.
- Hardened & Normalized for consistency
- 100% Individually inspected with Certification Sheet included
- Wood Box Included
- Laser Marked with Actual Diameter and Length



| Dual Contact Spindle Part Number | Part Number | D | L Projection |
|-------------------------------------|------------------|------|-----------------|
| CAT50-TB200-1200-B | CAT50-TB200-1200 | 2.00 | 12.00 |

CAT40

CAT 50

BT30

BT40

HSK 40E

HSK 63A

HSK 100A

STRAIGHT
SHANKS

COLLETS

PARTS &
ACCESS.

SHRINK
MACHINES

INDEXERS

